

and space, could be related to the degree in which those languages allow discontinuity—'structural distance'—between constituents that belong together. In other words, the extension of the depictive coding strategy into the less usual areas of the domain possibly correlates with 'freedom of word order'.

## 7

## On depictive secondary predicates in Laz

SILVIA KUTSCHER AND N. SEVİM GENÇ

### 7.1 Introduction

This chapter deals with morphosyntactic, semantic, and prosodic characteristics of depictive secondary predication in Laz. We show that Laz adjunct expressions generally cannot be divided into depictive and adverbial constructions on the basis of their morphosyntactic properties. We also deal with some prosodic characteristics of adjuncts expressing manner and state, and discuss to what extent depictive expressions may be delimited from manner adverbials on the grounds of intonational patterns. Concerning the semantic interpretation of adjuncts in Laz, we argue that they are vague with respect to participant- or event-oriented readings. Laz clause-level adjuncts thus are general adjunct constructions in the terminology proposed in the introduction to this volume. An interesting exception to this generalization are distributive numeral expressions, which can be argued to be a genuine depictive construction.

A sister language of Georgian, spoken on the south-eastern coast of the Black Sea, Laz is the only member of the South Caucasian family which is spoken primarily outside Georgia. The vast majority of its speakers live in Turkey and are bilingual. An increasing number of young Laz, however, are fluent only in Turkish. In addition, native speakers of Laz restrict using their mother tongue to private communications amongst friends and family members.

The variety of Laz discussed here is the one spoken in the city of Ardegen and the villages of the Ardegen region. Although this dialect (Ardegen-Laz) differs from other Laz varieties with respect to the case-marking system (see Kutschker 2001: ch. 5), it is similar to the other dialects in that no variant of Laz exhibits

The authors would like to thank Eva Schultze-Berndt, Nikolaus Himmelmann, and Katrin Lehmann for numerous comments on previous versions of this chapter, and Britt Tennme for brushing up our English. We also are grateful to the patience and helpfulness of the Laz speakers in the region of Ardegen and in Germany, who have supported our work for several years now.

NP internal agreement or an adverbialis case, in contrast to the Georgian varieties discussed by Boeder (Ch. 6, this volume).

The data presented in this chapter consist of utterances taken from a corpus of spoken texts recorded on location in Turkey. Some texts from this corpus have been published in Wodarg (1995) and Kutscher and Genç (1998). Examples from these publications are marked with W (for Wodarg) and K/G (for Kutscher and Genç) followed by an abbreviated title of the source text and the reference number of the intonation unit (e.g. K/G murunxsi 003). Other examples are from our research on positional verbs elicited with stimuli of the Language and Cognition Group of the Max Planck Institute for Psycholinguistics in Nijmegen. These are marked 'Posif'. Examples not marked for their source have been elicited for the purposes of this article.

The structure of the chapter is as follows. Section 7.2 gives a short overview of Laz basic clause structure. Section 7.3 focuses on how NP-internal modifiers can be delimited from adjuncts. Section 7.4 concerns participant-oriented and event-oriented manner expressions, and gives an overview on their segmental and distributional characteristics (7.4.1) followed by a few remarks on prosodic communalities and differences (7.4.2). Section 5 deals with participant-oriented and event-oriented uses of adjuncts in instrumental case (7.5.1), motative case (7.5.2), and locational nominals (7.5.3). Section 7.6 argues that distributive numerals are expressed by a genuine depictive construction in Laz. Section 7.7 deals with expressions of role and life stage, which in Laz are biclausal in nature. Section 7.8 concludes.

## 7.2 Morphosyntactic essentials

Laz is basically an SOV language, exhibiting the categories case and number in nominal expressions and a rich inventory of verbal categories with up to ten different morphological slots to be filled in the predicate (see Kutscher 2001: ch. 1). Predicates in Laz are head-marking—i.e. depending on the valence of the verb, verbal inflection is mono- or polypersonal.

With polypersonal verbs the finite verb inflects for both actor and undergoer as in (1).

- (1) *cemçam!*  
hit:|2>|1|SG.PRS  
'You beat me.'

<sup>1</sup> Examples are written in the Lazoglu/Feurstein orthography introduced to the Laz community in Turkey in 1984. It deviates from the Caucasianists' transcription in the following graphemes (<Laz=Caucasianist>): <ç=ç>, <ç=ç>, <ç=ç>, <k=k>, <ç=ç>, <ç=ç>, <ç=ç>, <ç=ç>, <ç=ç>, <ç=ç>.

Laz is an active language (Klimov 1974), i.e. monopersonal verbs subdivide into two classes, depending on whether the verb takes a controlling or non-controlling single core argument. Controlling single core arguments are marked as actor on the predicate, cf. the first person marker *b-* in (2a). Non-controlling single core arguments are marked as undergoer, cf. the first person marker *m-* in (2b). This is indicated by an arrow (>) in the gloss.

- (2) a. *bulur*  
go:1SG.PRS  
'I go.'
- b. *maçinden*  
sneeze:>1SG.PRS  
'I sneeze.'

Note that information on person and number in Laz predicates is not marked by a single prefix but rather results from the interaction of prefixes and suffixes. These are portmanteau forms coding tense/aspect/mood simultaneously (see Mattissen 1995).<sup>2</sup>

Argument NPs are always non-obligatory and often are omitted in discourse. If present all argument NPs in Ardegen-Laz are unmarked for case, as opposed to other Laz dialects. This holds for the actors of polypersonal predicates (3a, b), primary and secondary objects (3b), and for the single core argument of monopersonal inactive predicates (3c).

- (3) a. *baba pencere kosuy*  
father window clean:|3>|3|SG.PRS  
'Father wipes the window.'
- b. *nana baba bere meçay*  
mother father child give:|3>|3|SG.PRS  
'Mother gives the child to Father.'
- c. *biçi aşıurinen*  
boy be\_afraid:>3SG.PRS  
'The boy is afraid.'

<sup>2</sup> Person-marking in the glosses includes information on the macro-roles actor and undergoer. Undergoers are marked with a preceding angled bracket, >. In polypersonal predicates this bracket is to be read as 'acts on'. In monopersonal-inactive predicates, it marks the single core argument as a non-controlling argument. The single core argument of monopersonal active predicates is an actor and has no special marking.

Adjuncts, e.g. goals (4a) or instruments (4b) take oblique case-marking.

- (4) a. *yeceküleşa* *eşkaftaten* (...)  
 yeceküle-şa eşka-ftaten  
 'place name'-MOT up-go:PL.FUT.PFV  
 'We went up to Yeceküle.' (K/G *geceküle* 005)

- b. *şarite* *goçxu;* *şkomu* \3  
 şari-te goçxu şkomu  
 water-INS clean:3SG.PST.PFV eat:3SG.PST.PFV  
 'He cleaned it with water and ate it.' (K/G *proyoni* 031)

Expressions of location (5a) or time (5b), however, are always unmarked for case.

- (5) a. *Trabzoni ya* (0.3) *xolo* *teyyare* *koçpevedi*  
 Trabzoni ya xolo teyyare ko-ce-pxedi  
 Trabzon QUOT again plane EMPH-down-sit:1SG.PST.PFV  
 'He said: "In Trabzon I sat down in an airplane once again".'  
 (K/G *Ferat davı* 1 002/3)

- b. a. *mapxa ndya* (0.1) *xvala* *pucepe*  
 a mapxa ndya xvala puci-pe  
 one sunny day alone cow-PL  
*keşkebuçvi* \  
 k-eşkebuçvi  
 EMPH-up: lead:1>3]SG.PST.PFV  
 'One sunny day I brought the cows up alone.' (W *Kuhert* 004)

Having set out the major characteristics of Laz clause structure, in the following sections we will turn to the nature of participant-oriented adjunct constructions beginning with delimiting unmarked adjuncts from NP-internal modifiers.

### 7.3 Participant-oriented adjuncts vs. NP-internal modifiers

In contrast to Georgian (see Boeder, Ch. 6, this volume), Laz NPs only inflect on the last element of the phrase and do not exhibit NP-internal agreement.

<sup>3</sup> In transcripts of audio data intonational units are delimited as follows: \ = final intonation, i.e. pitch drops to the base line; ; = medial intonation, i.e. pitch ends in mid-range either level or slightly falling; / = progradient intonation, i.e. final pitch is clearly rising. A number in brackets, e.g. (0.1), indicates the length of a pause in seconds.

as (6) illustrates (see Kutscher 2001: ch. 2 for details).

- (6) (...) *pasari lemşi* *kelebuçi* /  
 pasari lemşi-te ko-elebuçi  
 rusty needle-INS EMPH-sew:1>3]SG.PST.PFV  
 'I sew it together with a rusty needle.' (K/G *korne* 011)

In (6) the instrument-NP *pasari lemşi* 'with a rusty needle' is case marked only on the semantic nucleus (*lemşi* 'needle') of the NP, whereas the attribute *pasari* 'rusty' is a bare adjective stem. The last lexical element of an NP can either be the semantic nucleus (as in (6)) or a possessive pronoun (cf. (7)).

- (7)  
*pasari lemşi* *şkimi-te* *kelebuçi*  
 pasari lemşi şkimi-te ko-elebuçi  
 rusty needle POSS.1SG-INS EMPH-sew:1>3]SG.PST.PFV  
 'I sew together it with my rusty needle.'

Hence, the right border of an NP can clearly be identified by inserting a possessive pronoun into the phrase. NP-internal modifiers can thus be formally distinguished from participant-oriented adjuncts following the NP. Compare (8a) with (8b).

- (8) a. *tuşa cari* *şkimi* *binxor*  
 hot bread/meal POSS.1SG eat:1SG.PRS  
 'I eat my hot meal.'  
 b. *cari* *şkimi* *tuşa* *binxor*  
 bread/meal POSS.1SG hot eat:1SG.PRS  
 'I eat my meal hot.'

In (8a) the adjective *tuşa* 'hot' is part of the NP and functions as an NP-internal modifier to its head noun. The position of *şkimi* in (8b) shows that the modifier *tuşa* 'hot' is outside the NP. It serves as a clause-level adjunct with object-oriented reading. Although the semantic nucleus of the NP functions as the controller of this participant-oriented adjunct, *tuşa* 'hot' exhibits no morphological means to show this semantic relation overtly. In this respect as well, Laz contrasts with Georgian.

While participant-oriented adjuncts following their controller NP can be distinguished from NP-internal modifiers, the possessive pronoun insertion test obviously does not work for adjuncts that are placed to the left of their controller-NP. Hence, *tuşa* 'hot' in (8a) may either be read as an NP-internal modifier or as a participant-oriented adjunct of its own. In actual utterances,<sup>4</sup>

<sup>4</sup> Note that Laz is mainly a spoken language. There are no widespread mass media in the language and only a few printed books and journals. Most Laz do not read and write in their language. There is no standard variety.

however, a participant-oriented adjunct construction differs from one with NP-internal modification with respect to prosody. A participant-oriented adjunct may form an intonation unit of its own (see section 7.4.2), while this does not hold for NP-internal modifiers.

#### 7.4 Depictive and manner expressions

This section is concerned with participant-oriented expressions of state (i.e. the kind of expression widely used to exemplify depictives) and event-oriented manner expressions. We use the term DEPictive in this section as a convenient shorthand for 'participant-oriented expression of a state', i.e. for a purely semantically defined expression type. As we will see, there is little evidence to support the distinction of two different (formal) constructions for these two kinds of expression.

##### 7.4.1 Similarities in distribution

In Laz, there are no segmental means to distinguish manner adverbials and depictives. For manner expressions, compare the adjectives *vrosi* 'good, well' and *evedi* in (9), for depictive compare the participle *okokoteri* in (10).

- (9) a. *vrosi gamiṣedi*; *gazirasen* *ya* *koḡepe* \\  
*vrosi* *gamaṣedi* *gazirasen* *ya* *koḡi-pe*  
 good look through:2SG.PST.PRV see:>2SG.FUT.PRV QUOT man-PL  
 'Look carefully. You'll see (something),' the men said.' (K/G  
*muṣuṣxi* 032)

- b. *evedi komoxti* \\  
*evedi* *ko-moxti*  
 quick EMPH-come:2SG.IMP  
 'Come here quickly!' (W *Bienentext* 034)

- (10) *masa-ṣi cindo*:(1.9) *okokoteri* *eo-zun* \\  
 table-GEN surface folded in half on-lie:3SG.PRS  
 'It is on the table, folded in half.' (Posit)

The position of an adjunct constituent of any kind is more or less free, i.e. it depends on discourse pragmatic rules. The preverbal position is the preferred position for both depictive and manner expressions with respect to text frequency and in terms of the order usually given in elicited utterances. Note that preverbal position is the preferred slot for focused constituents. For example, interrogative pronouns are obligatorily placed there and cannot be intonationally detached from the predicate: compare (11).

- (11) *Yoma cuma ṣkani noya mu iindru?*  
 yesterday brother poss.2SG market what buy:3SG.PST.PRV  
 'What did your brother buy on the market yesterday?'  
 \**Yoma cuma ṣkani mu noya iindru?*

In this position, participant-oriented and manner expressions as well as other kinds of constituents tend to have a falling pitch accent with the fall continuing on the following predicate (cf. figures 7.1 and 7.2). Topics are placed utterance-initially.

Depictive expressions may precede or follow their controller, as the examples in (11) illustrate. In (12a), the controller *toḡi* 'rope' precedes the depictive adjunct *kirkoleri* 'wound up', while in (12b) the controller *toḡi* 'rope' follows the adjunct *koḡeri* 'folded'. Note that the depictive expressions in both utterances are prosodically separated from the adjacent constituents.<sup>5</sup>

- (12) a. *toḡi*; *kirkoleri*; (0.1) *buḡiṣi* *cindo* *goozun* \\  
*toḡi* *kirkol-eri* *buḡi-ṣi* *cindo* *goo-zun*  
 rope wind-PTCP stump-GEN surface on-lie:3SG.PRS  
 'The rope is on the tree stump in a wound fashion.' (Posit)
- b. *boṣi* *tiḡina* / (0.5) *koḡeri* / (1.1) *toḡi* *goozun* \\  
*boṣi* *tiḡina* *koḡeri* *toḡi* *goo-zun*  
 empty basket fold-PTCP rope on-lie:3SG.PRS  
 'On an empty basket there is a rope in a folded state.' (Posit)

Furthermore, depictive expressions may appear in clause-initial position; cf. *kuḡxe ṣunḡu* 'barefoot' in (13).

- (13) *kuḡxe ṣunḡu ṣari moyapay*  
*kuḡxe ṣunḡu ṣari moy-ap-ay*  
 foot-naked water bring-CAUS-[3>3]SG.PRS  
 'She sent her barefoot for water.' (W *Fadime* 009)

Depictive expressions may also be placed after the predicate as is the case with the depictive *kurru* 'plain' in (14).

- (14) *nezi binxor / (0.1) kuḡru /*  
*nezi binxor kurru*  
 walnut eat:3SG.PRS plain  
 'I eat the walnuts plain [i.e. without any other food].' (K/G  
*nezi* 036)

<sup>5</sup> At this point, it remains to be investigated what kinds of semantic effect correlate with these alternative positions and prosodic breaking.

These variations in word order are also found with manner expressions. They too may follow the predicate, as shown for the manner adverbial *evedi* 'quickly' in (15).

- (15) *Kedir Kedir a; (o.1) a komoxti \ evedi;*  
*Kedir Kedir a a ko-moxti evedi*  
*Kedir Kedir one one EMPH-come.2SG.PST.PRV quick*  
 'Kedir, Kedir, come on. Quickly!' (W *Bienentext* 032)

In post-predicate position, both depictive and manner expressions exhibit the characteristics of afterthoughts, i.e. they constitute a separate intonation unit and follow a prosodic unit with final intonation.

Manner adverbials may also be non-adjacent to the predicate, as is the case in (16), where the interrogative pronoun *mi* 'who' directly precedes the predicate.

- (16) *bitumi vrosi mi ompuluz?*  
 all well who hide:[3>3]SG.PST.PRV  
 'Who has hidden everything well?'

In conclusion, we can state that in Laz depictive (participant-oriented) and manner (event-oriented) expressions cannot be distinguished by segmental or distributional means. They would therefore appear to be formally expressed by a single construction type which allows both participant-oriented and event-oriented readings, thus exemplifying a general adjunct construction as defined in the introduction to this volume. However, there may be prosodic differences between the two expression types, as further discussed in the next section.

#### 7.4.2 Prosodic differences?

In this section, we provide preliminary evidence for the observation that depictive and manner expressions differ with regard to at least one aspect of prosodic marking. In preverbal position, depictives may be intonationally detached from the main predicate of the clause, i.e. they may form an intonation unit of their own. In contrast, manner adverbials cannot be intonationally separated from the predicate in this position. Note that these are very tentative observations, since Laz prosody is still very poorly understood.

In Laz, elements in preverbal position show a strong tendency to form an intonational unit with the following predicate. This holds for adverbials as well as depictive expressions, as the following examples demonstrate. Figure 7.1

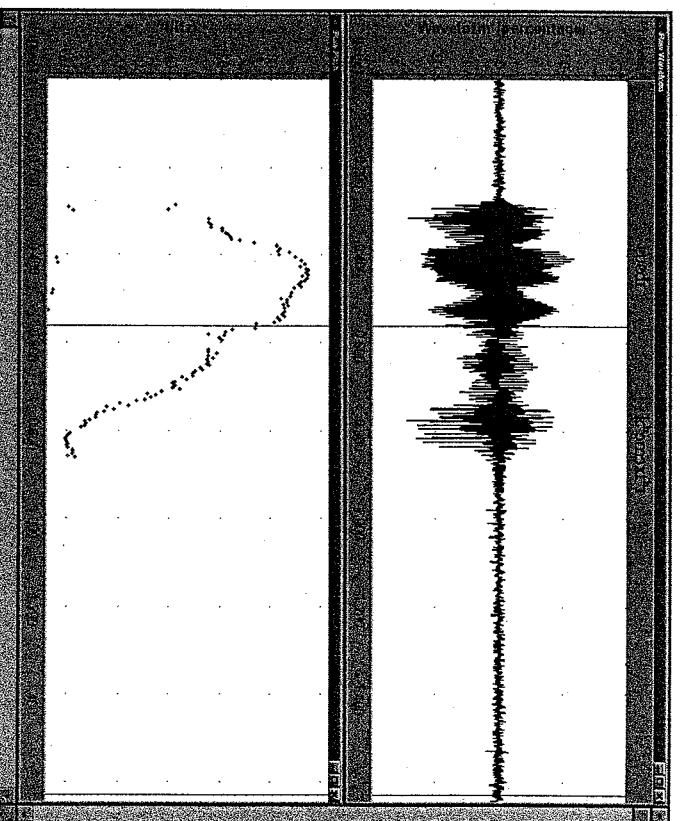


FIGURE 7.1 Waveform and pitch extraction for example (9b)

shows the waveform and pitch extraction for the manner adverbial in (9b) above. The vertical cursor line crossing the graphs indicates the word boundary between the adverb *evedi* 'quickly' and the predicate *komoxti* 'come'.

Figure 7.1 clearly shows rising  $F_0$  on the first syllable of the manner adverb *evedi* followed by a fall on the second syllable. The fall continues smoothly into the first syllable of the predicate *komoxti*.

A continuous contour like the one in Figure 7.1 is found on most of the preverbal depictive expressions in our corpus, as well. Figure 7.2 illustrates the  $F_0$  contour of the depictive expression *okokoterti* 'folded' given in example (10) above. The relevant section of the contour is marked with a vertical line in the figure. Once again the falling contour on the depictive participle *okokoterti* 'folded' is continued on the following predicate *eozun* 'it lies on sth.'.

In contrast to adverbial manner expressions, with depictive expressions we also find examples in our corpus where the depictive expression is intonationally detached from the following predicate by a clear break in the

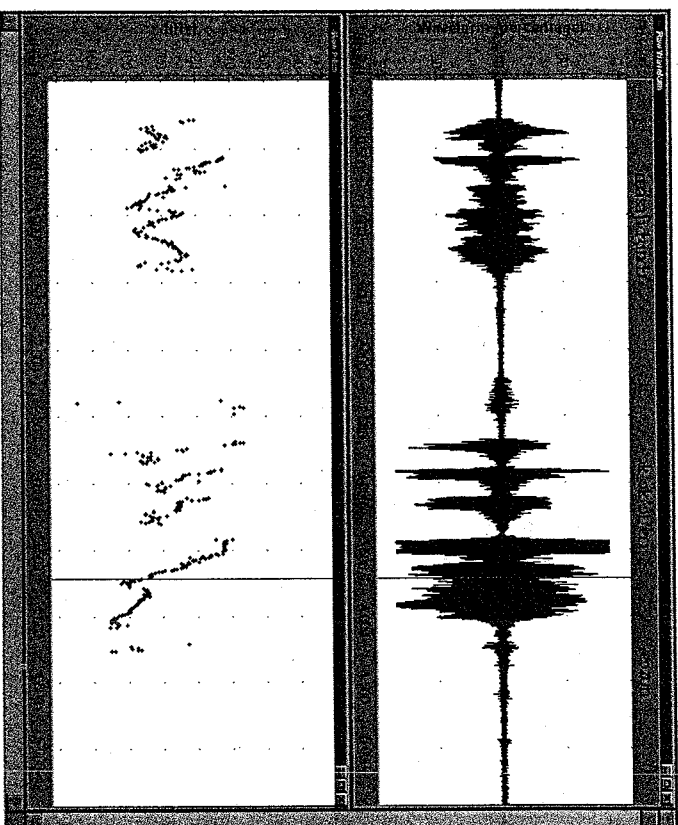


Figure 7.2 Wave form and pitch extraction for example (10)

F0 contour, as is illustrated in (17) and figure 7.3.<sup>6</sup>

- (17) *gzalineri* / (0.6) *mendaxtey* \  
 by\_foot go\_to:3PL.PST.PFV  
 'They went there by foot.' (K/G *askerepe* III)

As Figure 7.3 illustrates, the F0 contour in this case is quite the opposite of those given in Figures 7.1 and 7.2. In figure 7.3 the F0 clearly rises on the last syllable of the depictive *gzalineri* 'by foot' (in all likelihood realizing a high-rising boundary tone). The onset pitch of the following predicate, *mendaxtey*, is clearly much lower and in the mid range typical for the onset of a new intonation unit.

As for manner adverbials, we did not find an F0 contour in our corpus comparable to the one illustrated in Figure 7.3 for depictive expressions. Therefore, we tested this intonation pattern by elicitation. The test utterance

<sup>6</sup> The semantic effects of the prosodic break need further investigation.

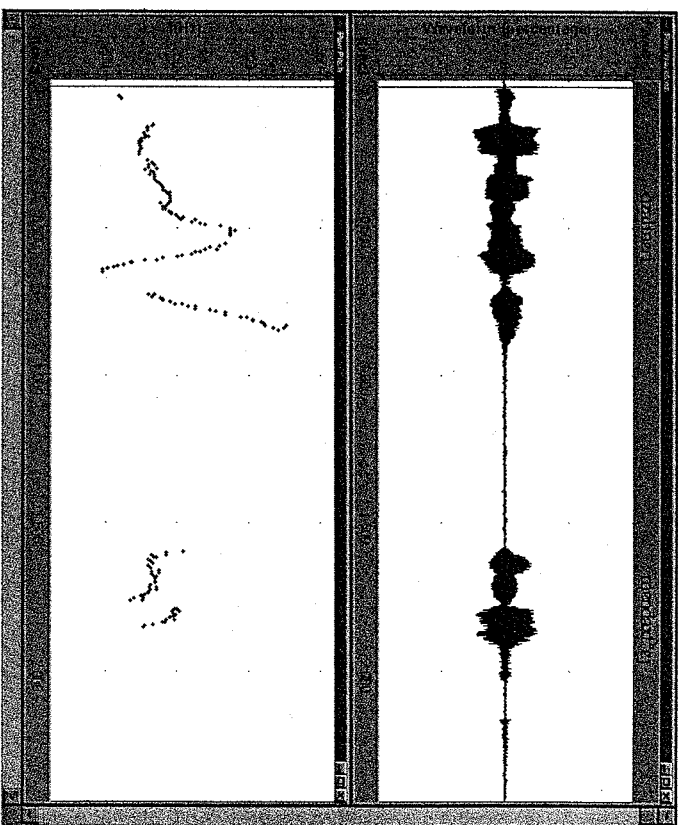


Figure 7.3 Wave form and pitch extraction for example (17)

(18) was taken from a narrative in our corpus. In the original utterance, the manner adverbial *wrosi* 'well' and the predicate *dvompuli* 'hide it' are part of a single continuous pitch movement (see Figure 7.4).

- (18) *bitumi oxzone wrosi dvompuli* /  
 bitumi oxzone wrosi dv-ompuli  
 all attic good EMPH-hide:[2<3]SG.IMP  
 'Hide everything well in the attic.' (K/G *askerepe* 104)

For our test, the second author of this chapter, a native speaker of Laz, produced the utterance illustrated in (19), i.e. a high-rising, unit-final pitch on the manner adverbial *wrosi* followed by a break and a mid range onset on the predicate *dvompuli*.

- (19) *bitumi oxzone wrosi / dvompuli*  
 all attic well EMPH-hide:[2>3]SG.IMP  
 'Hide everything well in the attic.'

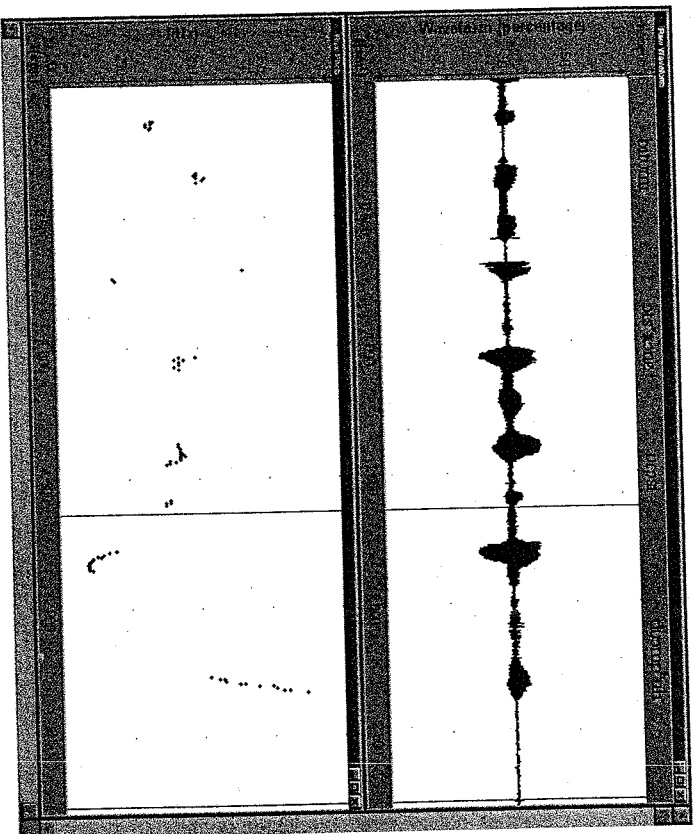


Figure 7.4 Wave form and pitch extraction for example (18)

This test utterance was played to two other native speakers. Both speakers clearly rejected it on the grounds that it was 'not sounding right'. Both of them only accepted intonation patterns close to the one found in (18), i.e. with no intonational break.

To conclude, manner adverbials and depictive expressions appear to be very similar with respect to (the lack of overt) marking and distribution. But depictive expressions may constitute intonation units of their own (typically with progradient final intonation) when in pre-predicate position. In contrast, sequences of manner adverbial plus predicate strongly disfavour prosodic breaking. Preliminary analyses of other adverbial expressions support the impression that the restrictions concerning possible intonation patterns demonstrated for manner adverbials in this section also hold for other adverbials. But the intonational properties of adverbial and depictive expressions definitely need further investigation. For the time being, we consider them to instantiate a single construction type, i.e. a general adjunct construction.

## 7.5 Other types of adjunct that allow participant-oriented readings

This section provides data on other types of expressions which share semantic characteristics with depictive expressions in Laz. Section 7.5.1 investigates the semantic range of the instrumental case, section 7.5.2 discusses uses of expressions marked with motative case, and section 7.5.3 deals with locational nouns. For all three kinds of expressions, we will argue that no clear boundary can be drawn between participant-oriented and event-oriented constructions.

### 7.5.1 Instrumentals

The suffix *-te* mainly marks NPs referring to the instrument of an event. Its use is restricted to non-human referents (see Kuischer 2001: ch. 5 for details). In addition to encoding an instrument, the suffix covers cause (20, 21), purpose (22), and accompaniment (23) readings. In the following, we discuss these uses in more detail.

An instrumental case may mark adverbials of cause, as is the case with the verbal noun *obiru* 'play' in (20) which gives the reason why the speaker returned home late.

- (20) *himndya* / (o.1) *obirite* *leba domau* \  
 him-ndya obiru-te leba do-mau \  
 DEM-day play:VN-INS late EMPH-become:>1SG.PST.PFV \  
 'On this day I was late because of playing.' (W *Kuh*text 006)

Instrumentals of cause are not restricted to event-oriented uses. Compare the noun *škurina* 'fear' in instrumental case in (21). The example is from a narrative about a mother and a daughter harvesting tea up in the mountains away from their village. On their way home they reach a river and as dusk comes, the mother begins her evening prayer. While the mother is praying, the daughter hears some strange noises and thinks the river ghosts are coming to get her. The mother, knowing that her daughter is a timid person and would prefer to go home and not pray at the bank of the river, thinks that her daughter is hallucinating and says:

- (21) (...) *škurinate* *ognam* *ya* \  
 škurina-te ognam ya \  
 fear-INS hear:[2>3]SG.PRS QUOT \  
 'You only hear it because you are frightened.' (K/G *geckulsa* 028)

In this context, the nominal *škurinate* denotes a mental state of the actor of the predicate *ognam* 'you hear it', i.e. the daughter, and hence functions as a participant-oriented expression.

The same holds for the instrumental phrase *parate* 'with money' in (22) which denotes the purpose of the activity of the actor participant of the main predicate *pšilum* 'I pluck':

- (22) *çay*; (0.1) *parate* *pšilum*  
 çay<sup>i</sup> para-te pšilum  
 tea money-INS pluck:1SG.PRS  
 'I am harvesting tea for money [in order to get money].'

The instrumental in (22) also relates to the mental state of the actor or rather, it encodes that the actor is accompanied by a certain mental state, namely the thought of money. Hence, more literally one may translate (22) as 'I pluck tea with money on my mind'.

An instance of the participant-oriented use of the accompaniment meaning of the instrumental is the instrumental phrase *kakalite* 'with a stone' in (23).

- (23) *mbuli* *kakalite* *ceşkidu*  
 mbuli kakalite ceşkidu  
 cherry stone-INS swallow:3SG.PST.PFV  
 'S/he swallowed the cherry with its stone.'

As can be shown by the insertion of a possessive pronoun in (24) (see section 7.2 above), *kakali* 'stone' in (23) is not internal to the object NP *mbuli*. It forms a constituent of its own and functions as a participant-oriented adjunct.

- (24) *mbuli* *şkimi* *kakalite* *ceşkidu* → \**mbuli* *kakalite* *şkimi* *ceşkidu*  
 mbuli şkimi kakali-te ceşkidu  
 cherry POSS.1SG pip-INS swallow:3SG.PST.PFV  
 'S/he swallowed my cherry with its stone.'

In some cases the instrumental expression is semantically vague as to a participant- or event-oriented reading, as seen in (25).

- (25) *žuneri* *kibrite* *cari* *imxoy*  
 žun-eri kibri-te cari imxoy  
 hurt-PRCP teeth-INS meal/bread eat:3SG.PRS  
 'S/he eats the meal with hurting teeth.'

In (25), the hurting teeth of the actor are the instruments of the eating process, i.e. on the one hand the expression is event-oriented. Simultaneously, the instrumental phrase in (25) refers to the physical state of the eater and therefore is participant-oriented.

To conclude, the instrumental allows event-oriented as well as participant-oriented uses. Moreover, in some instances the orientation of the instrumental is in fact vague. Hence, Laz instrumentals instantiate what Himmelmann and Schulze-Bendit (Ch. 1, this volume) call a general adjunct construction. In the following section, we will show that comparable findings hold for motative phrases.

### 7.5.2 Motatives

The term motative originates in the grammar of Pazar-Laz written by Rosen (1844) and captures the particular semantics of this case, which only encodes that the referent of a nominal thus marked has moved, but it is vague with respect to whether the referent is moving towards a goal (as in (26a); see also (4a) above) or moves away from a source, as in (26b).

- (26) a. *bere* *oxori-ša* *amulun*  
 bere oxori-ša amo-ulun  
 child house-MOR into-go:3SG.PRS  
 'The child goes inside the house.'
- b. *bere* *oxoriša* *gamulun*  
 bere oxori-ša gamo-ulun  
 child house-MOR out-go:3SG.PRS  
 'The child goes out of the house.'

The direction of movement is usually specified by a spatial prefix to the predicate, e.g. *amo-* 'into' in (26a) or *gamo-* 'out' in (26b).

Motative phrases most frequently are event-oriented, as in the preceding examples. In some cases, however, we have found motative-marked phrases which clearly have participant-oriented semantics. In these cases, the predicate denotes an event of emission and the motative relates to the source of this event; compare (27) for illustration.

- (27) *parmakluypesa* *buoxam* \ *naana*  
 parmakluYi-pe-ša buoxam nana  
 railings-PL-MOR call:1>3]SG.PRS mother  
 'I called her from the railings: "Mother."' (K/G nezi 044)

In (27), the narrator of the story is accidentally caught in a storehouse and tries to call her mother so that she may be released. The actor of the predicate *buoxam* 'I call her' is behind the railings of the storehouse, while the undergoer, the person called, is outside the storehouse, coming down the street. Interestingly, the motative phrase in these participant-oriented uses expresses the



location of the controller, not its movement towards a goal or from a source. The calling, however, is directed away from the controller in (27), which makes the controller the source of the event expressed in the predicate. Hence, the motative phrase at the same time is also event-oriented. Compare (28), where the caller comes to the storehouse and calls a person standing behind the storehouse's railings. In this case the motative-marked phrase is purely event-oriented, denoting the direction of the calling but not the location of the caller.

- (28) *serende-şa moxtu do*  
storehouse-MOR come-3SG.PST.PRV and  
*paṛmakluvepe-şa uoxu*  
railings-MOR call[3>3]SG.PST.PRV  
'S/he came to the storehouse and called to her towards the railings.'

To conclude, Laz has a general adjunct construction of location—the motative-marked phrase. These motative phrases may be used to express the location of a participant and at the same time are event-oriented in that they indicate the direction to which the event is oriented.

### 7.5.3 Locational nominals

In addition to the general adjunct construction of location dealt with in the preceding section, Laz also has expressions in which the location of a participant is expressed by an unmarked locational nominal, e.g. *cindo* 'top' in (29).

- (29) *cindo keizadman /*  
*cindo ko-e-izadman*  
top EMPH-UP-PULL:3PL.PRS  
'They [the boys] pull it (the food) up [from a shelf in the kitchen] being on the top [i.e. in the store room above the kitchen].' (K/G lu 062)

The landmark expression *cindo* 'top' in (29) denotes the location of only one of the participants in the event, namely the boys. Conversely, the preverb *e-* 'up' denotes the direction of the food which is being pulled up, i.e. the food is on its way up to the boys. With respect to participant orientation, Laz locational nominals, which consist of a locative adverb plus the suffix *-ndo*, differ from the locative adverbs from which they are derived.<sup>7</sup> The latter are compatible with

<sup>7</sup> Landmark expressions with the suffix *-ndo* like *cindo* 'top' are nominals. They can appear in core argument function and may be modified by a genitive NP (cf. (15a)).

- (i) *cindo muşi buzi diu*  
*cindo muşi buz do-in*  
top POSS.3SG ICE MOD-become:3SG.PST.PRV  
'Its surface became ice.' (K/G *qompe* 006)

spatial preverbs of the same semantic domain. Thus, the locative adverb *cin* 'up' in (30) specifies or emphasizes the spatial semantics of the preverb *e-* 'up'.

- (30) *cin e-izadman*  
up UP-PULL:3PL.PRS  
'They pull it up [above].'

Locative adverbs are event-oriented only. The adverb *cin* 'up' denotes the upward movement of the food and, in contrast to the locational nominal in (29), does not relate to the location of the actor. The puller in (30) may as well transport the food away from herself with the help of a block and tackle.

Since the nominal expressions may be participant-oriented, there is a functional difference between locational adjunct expressions containing a nominal with *-ndo* suffix and those with an adverb. Nevertheless, locational nominal expressions cannot be analysed as a genuine depictive construction, since they may also be used as locative modifiers. In this function, the locational expression refers to the location of the event to which the predicate relates. Compare (31), where the locational expression *oxorisi cindo* 'on top of the house' relates to the place where the event of the speaker's spreading the hazelnuts is taking place.

- (31) *oxori-şi cindo nixiri goo-bobyam*  
house-GEN top hazelnut on-the mass:[1>3]SG.PRS  
'I spread hazelnuts on top of the house.'

Laz locational nominal expressions may also serve to relate only to a part of the event expressed by the predication (i.e. internal modifier function, cf. Maidenborn (2001)). Compare (32) for illustration.

- (32) *kaṛti cindo me-buçadi*  
nail top at-hammer:[1>3]SG.PST.PRV  
'I hammered the nail on the upper part [of the door].'

The locational nominal *cindo* 'top' in (32) does not relate to the location of the whole event, since only the hammering and the object of the hammering is located on the upper part of the door. The actor of the event is not located there. Hence, the locational nominal specifies an internal aspect of the event

Conversely, bare forms, i.e. expressions without *-ndo* suffix, are locative adverbs. They cannot appear in core argument function (see Kutscher 2001, chapter 3 for details) and cannot be modified by a genitive NP.

- (ii) *nixiri cin goobobyam -> \*oxori-şi cin*  
hazelnut above spread.on:[1>3]SG.PRS  
'I spread hazelnuts above.'

but does not locate the event as a whole. In this function, the locational nominal is both participant-oriented (relating to the location of the nail, but not the actor) and event-oriented.

Locational nominals can also be used as frame-setting expressions (Maienborn 2001). In this function, the locational nominal does not relate to the location of the event directly but sets a frame for it. Compare (33), where a young woman is instructed by her mother-in-law how to escape from the Russian soldiers who are about to invade the village.

- (33) *oxori doloxendo /neknape pencepe vrosi* (0.3)  
 oxori doloxendo nekna-pe pencepe-pe vrosi  
 house inside door-PL window-PL good  
*doğadı* / (0.5) (...)  
 do-o-ğadı  
 EMPH-nail:[2>3]SG.PST.PFV  
 'Inside the house, nail the doors and windows well...' (K/G  
*askerepe* 098–102)

The locational expression *oxori doloxendo* 'inside the house' in (33) is intonationally detached and has a progradient intonation contour. It sets the frame of the hammering event denoted in the following intonation unit *neknape pencepe vrosi doğadı* 'nail the doors and windows well'.

In sum, locational nominal expressions in Laz serve the three different functions which Maienborn (2001) argues to be typical for locative adjuncts: internal and external modification and frame-setting. With respect to these functions, locational nominal expressions in Laz are event-oriented. In addition, locational nominals in some uses exhibit purely participant-oriented readings. Hence, locational nominal expressions in Laz are another instance of the general adjunct construction.

### 7.6 A genuine depictive construction: distributive numerals

This section deals with quantifier expressions. On constructional grounds, these have to be divided into two subclasses in Laz: collective quantificational and distributive quantificational expressions.

Collective quantificational expressions are similar in construction to the manner expressions discussed in section 7.4 above. They are construed with unmarked quantifiers such as *xvala* 'alone' in (34) and may have participant-oriented readings (34a) or are vague with respect to participant and event orientation (34b).

- (34) a. *xvala eška-fare* /  
 alone up-go:1SG.FUT.PFV  
 'We will go up alone.' (K/G *xvala* 004)  
 b. *kişi çoyi xvala pşkudur*  
 winter village alone live:1SG.PRS  
 'In the winter I live on my own in the village.'

Bare numerals, however, can only be interpreted as event-oriented. Compare the numerals *ar* 'one' and *cur* 'two' in (35), which denote the frequency of the soldiers' comings.

- (35) *askerepe a moxtey ; cu moxtey* /  
 askere-pe ar moxtey cur moxtey  
 soldier-PL one come:3PL.PST.PFV two come:3PL.PST.PFV  
 'The soldiers came once, they came twice.' (K/G *askerepe* 019)

Reduplicated numerals, in contrast, are clearly participant-oriented, as in (36).

- (36) *askerepe circur moxtey*  
 soldiers two:RDP come:3PL.PST.PFV  
 'The soldiers came in pairs'

These participant-oriented numeral expressions can only have a distributive meaning (e.g. 'two by two' in the above example) and cannot be used to express the total number of referents of the phrase.<sup>8</sup> Like the German construction with *zu* 'to' + numeral.<sup>9</sup>

Other participant-oriented quantifiers may also be reduplicated, compare (37).

- (37) *xvalaxvala* / (2.3) *bulur \*  
 xvala:RDP bulur  
 alone go:1SG.PRS  
 'I walk totally alone.' (K/G *inornu* 058)

In these cases, however, the reduplication seems to be emphatic or, in the case of Turkish loans, may be induced by the Turkish source construction. Reduplication in these emphatic cases, however, is non-obligatory and hence not a genuine constructional means to encode participant orientation. In contrast, for numerals functioning as participant-oriented adjuncts

<sup>8</sup> When used in argument position, numerals show a special form with a suffix (for details, see Kutschera 2001: ch. 3.2.2).

<sup>9</sup> Compare German *Sie kamen zu zweit* (3PL came at two) 'The two of them came', referring to exactly two persons coming, in contrast to the distributive construction *Sie kamen in Paaren* (3PL came in pairs) 'They came two by two', referring to more than two persons.

reduplication is obligatory. Therefore, we would argue that reduplicated numeral expressions are an example of a genuine depictive construction.<sup>10</sup>

### 7.7 On expressing role and life stage in Laz

Expressions of role such as *I got the book as a present* are often considered to be typical examples of depictive secondary predicate expressions. Interestingly, adjunct constructions of this type cannot be found in Laz. Role expressions in Laz always have to be biclausal constructions. Both the role predication and the main predication form independent main clauses, each containing a finite verb. An example is given in (38).

- (38) *baba škimi doktori on \ hastahane ıcalıřay \*  
*baba škimi doktori on hastahane ıcalıřay*  
 father POSS.1SG doctor BE:3SG.PRS hospital WORK:3SG.PRS  
 'My father is a doctor. He works at the hospital.'

Life-stage expressions, which often occur in the same type of construction as role expressions (e.g. *she lived in Paris as a child*), occur in two types of construction in Laz. The first type of life stage construction is again biclausal in nature. The life stage is expressed in a finite copula construction such as *bot'i* 'I was' in (39). In contrast to biclausal role expressions, however, the life-stage expression in biclausal life-stage constructions is the predicate of a subordinate clause marked by the motative suffix *-sa*. The motative in these constructions, together with imperfective aspect, expresses the simultaneity of the two predications.

- (39) *bere botiřsa / lu zeri lu zeri va binxorti \*  
*bere boti-řsa lu zeri lu zeri var-binxorti*  
 child BE:1SG.PST.IPFV-MOT traditional meal NEG-eat:1SG.PST.IPFV  
 'When I was a child, I didn't eat *lu zeri*.'

The subordinate clause construction is obligatory for this type of life-stage expression and not merely an alternative as is the case e.g. in English, where

<sup>10</sup> Subject to the condition that distributive numeral expressions are analysed as depictive expressions, McGregor (Ch. 5, this volume) provides a detailed discussion of numerative expressions in some Australian languages. As he points out, distributive quantificational expressions (or, in his terms, iterative co-participation) do not as easily qualify as depictive expressions. Although semantically they are participant-oriented and predicative, at least in some of the Australian languages under consideration, they lack agreement with the designated controller. In the Panoan language Shipibo-Konibo (Valenzuela, Ch. 8, this volume), on the other hand, numerals in distributive function show agreement with the controller.

the subordinate clause *when I was a child* could be turned alternatively into the depictive construction *as a child*.

The fact that the subordinate clause is marked by a suffix expressing simultaneity which is similar in form to the motative case marker *-sa* (see section 7.3.2) gives rise to the question of whether this construction is a convert construction. Since the finite verb of the subordinate clause allows for an explicit subject NP and may have complements that are not co-referential with a participant of the matrix clause, we analyse the suffix in this use as a temporal conjunction. Compare (40), where *nana škimi* 'my mother' is the subject of the predicate *komoxtu* 'she came'.

- (40) *nana škimi oxori ko-moxtu-řa*  
 mother POSS.1SG house EMPH-come:3SG.PST.PFV-MOT  
*kitabı golobioni*  
 book read:1SG.PST.PFV  
 'When my mother came home, I was reading a book.'

The second type of life stage expressions has two variants. It may either contain a temporal adverb, as in (41b), or, for expressions denoting the exact age of the controller, a numeral is combined with the participle *řaneri* 'of age', as in (41a).

- (41) a. *cur řaneri osinapu ceboři*  
 cur řan-eri osinapu ceboři  
 two year-PRCP speak:VN begin:1<3>SG.PST.PFV  
 'Two years old I began to speak.'  
 b. *ordo yuru*  
 early die:3SG.PST.PFV  
 'S/he died young.'

This kind of life stage construction is an instance of the general adjunct constructions discussed in sections 7.4 and 7.5.

### 7.8 Conclusion

In this chapter we have presented an overview of expressions in Laz which allow participant-oriented readings. We have argued that although Laz has a wide range of expressions of this kind, there are no unique segmental or distributional means marking a given construction as a genuine depictive construction. The single major exception to this claim is reduplicated numerals functioning as distributive quantifiers (section 7.6). The fact that otherwise there appears to be no genuine depictive construction in Laz seems

to be based on two factors: (a) the lack of case agreement on various levels, including agreement between controllers and participant-oriented adjuncts; (b) the fact that participant- and event-oriented adjuncts share essentially the same distributional possibilities. They also appear to share essentially the same possibilities of prosodic marking, in particular the ability to appear in intonation units of their own. The only possible exception with regard to prosody pertains to the observation discussed in section 7.4 that manner adverbials in pre-predicate position cannot be separated prosodically from the following predicate. However, this observation as well as other features of prosodic marking and packaging are still in need of much deeper exploration.

## 8

## Participant agreement in Panoan

PILAR M. VALENZUELA

## 8.1 Introduction

Panoan is a well-established linguistic family in South America; it comprises some thirty languages spoken in the Amazon regions of Peru, Brazil, and Bolivia. PARTICIPANT AGREEMENT (PA) can be considered the typologically most salient feature of Panoan grammar. It refers to the use of a distinct inflectional morphology on adjuncts, in correlation with the syntactic function of the participant they are predicated of.<sup>1</sup> In this contribution, I examine PA in Shipibo-Konibo (SK), a Panoan language spoken by c.30,000 people settled along the Ucayali river and its main tributaries in the Peruvian Amazon. Although the discussion will be restricted to this single language, most of the points made also apply to the sister languages for which sufficient description is available. Consider the following sentences where the locative

The present account of the SK Participant Agreement system is based on Valenzuela (2003). I would like to thank Eva Schulze-Berndt and Nikolaus Himmelmann for their invitation to participate in this volume and for helpful comments on a previous version of this chapter. My analysis of the Panoan PA system has benefited from input from audiences who attended my talks at the Michigan Historical Linguistics Group hosted by Sally Thomason, and the MPI for Evolutionary Anthropology in Leipzig, in 2001 and 2002. I am very grateful for this. Foremost, I am indebted to the various Shipibo speakers who shared with me data and valuable insights on this fascinating aspect of their language; especially, I express my gratitude to Kestin Beso, Sanken Bari, and Yoi Sani. *Jakritibi ichabires trake!*

<sup>1</sup> In addition to PA, Panoan languages share the following morphosyntactic features: dominantly agglutinative morphology with 'polysynthetic tendencies' in the verb; use of suffixes and enclitics, except for a closed set of body-part prefixes which play an oblique function; basic AOV/SV order (following the labels in Dixon 1979 and 1994) and constituent order correlations conforming to this syntactic type; no (or very incipient) cross-referential pronominal marking in the verb or auxiliary; (split-)ergative alignments manifested through case-markers attached to the last NP word; syntax-ism/polyfunctionality involving a case enclitic -*n* which may indicate ergative, instrument/means, genitive, locative/allative or other oblique functions; a fairly complex switch-reference system; various types of transitivity-dependent concord; and innovative evidential systems with non-cognate morphology across languages from different subgroupings. Comparative analysis and reconstruction of the Panoan PA morphology can be found in Valenzuela (2003). See also Spang-Chavez (1998) for Amawaka, Loos (1999) for Kapanawa, and Fleck (2003) for Maïses.

## References

- Aarts, Bas (1995). 'Secondary predicates in English', in Bas Aarts and Charles F. Meyer (eds), *The Verb in Contemporary English: Theory and Description*. Cambridge: Cambridge University Press, 75–101.
- Adams, Bruce (1983). *A Tagmemic Analysis of the Wolaitia Language*. Ph.D. dissertation, University of London.
- Agbadja, Kokou Sènané (1983). 'Pour une approche nouvelle des prétendus "adverbes" Ebe', *Afrique et Langage* 19: 32–51.
- Aikhenvald, Alexandra Y., and Dixon, Robert M. W. (eds) (to appear). *Serial Verb Constructions in Crosslinguistic Perspective*. Oxford: Oxford University Press.
- Aissen, Judith (2000). 'A serial verb construction in Tzotzil', <http://ling.ucsc.edu/lorge/aisse.html>.
- Ameka, Felix K. (1991). *Ewe: its Grammatical Constructions and Illocutionary Devices*. Ph.D. dissertation, Australian National University.
- (1992). 'Focus constructions in Ewe and Akan: a comparative perspective', in Chris Collins and Victor Manfredi (eds), *Proceedings of the Kwa Comparative Syntax Workshop MIT 1992*. Cambridge, Mass.: MIT Working Papers in Linguistics 17, 1–25.
- (2001). 'Ideophones and the nature of the adjective class in Ewe', in Voeltz and Kilian-Hatz (2001: 25–48).
- (2002). 'Constituent order and grammatical relations in Ewe in typological perspective', in Kristin Davids and Beatrice Lamiroy (eds), *Nominative/Accusative*. Amsterdam: Benjamins, 319–52.
- (2003a). 'Prepositions and postpositions in Ewe (Gbe): empirical and theoretical considerations', in Patrick Sauzet and Anne Zibri-Hertz (eds), *Typologie des langues d'Afrique et universaux de la grammaire*. Paris: L'Harmattan, 41–67.
- (2003b). 'Today is far: situational anaphors in overlapping clause constructions in Ewe', in Mary E. Kropp Dakubu and Emmanuel K. Osan (eds), *Studies in the Languages of the Volta Basin 1*. Legon: Department of Linguistics, University of Ghana, 9–22.
- (to appear). 'Ewe serial verb constructions in their grammatical context', in Aikhenvald and Dixon (to appear).
- and Schultze-Berndt, Eva (2000). 'Adverbialiser or predicate(ion) marker? Ewe *-i* and its relatives in a typological perspective', Third World Congress of African Linguistics, Université du Bénin, Lomé, Togo, August 2000.
- Amha, Azeh (2001). *The Male Language*. Leiden: Centre for Non-Western Studies.
- and Dimmendaal, Gerrit J. (to appear). 'Verbal compounding in Wolaitia and self-organizing principles in languages', in Aikhenvald and Dixon (to appear).

- Amuzu, Evershed K. (1993). *Three-place predicates in Ewe*. MA thesis, University of Ghana, Legon.
- Andrews, Avery (1982). 'A note on the constituent structure of adverbials and auxiliaries', *Linguistic Inquiry* 13(3): 313-17.
- Anst, Gilbert (1966). *The Grammatical Units of Ewe: A Study of their Structure, Classes and Systems*. Ph.D. dissertation, University of London.
- Apridonidze, Šukia (1986). *Siŋqvaŋaŋgeba Axal Kartuliš* (XIX-XX sauk. prozis mxedvit. martivi cinadadeba) (EI). Tbilisi: Mecniereba.
- Arnott, David W. (1970). *The Nominal and Verbal Systems of Fula*. Oxford: Clarendon Press.
- Asher, Nicholas (1993). *Reference to Abstract Objects in Discourse*. Dordrecht: Kluwer.
- Austin, Peter (1981a). *A Grammar of Dyirri, South Australia*. Cambridge: Cambridge University Press.
- (1981b). 'Switch-reference in Australia', *Language* 57(2): 309-34.
- (ed.) (1988). *Complex Sentence Constructions in Australian Languages*. Amsterdam: Benjamins, 205-18.
- (1997). *Texts in the Mantharta Languages, Western Australia*. Tokyo: Institute for the Study of Languages and Cultures of Asia and Africa.
- Bartsch, Renate (1972). *Adverbialsemanantik*. Frankfurt a. Main: Athenäum.
- (1976). *The Grammar of Adverbials*. Amsterdam: North-Holland.
- Basilaia, Nikaandre (1966). 'Predikatali gansazyvrebis sesaxeb Axal Kartuliš', *Socxumis Pedagoguri Institutis Štomebi* 18-19: 257-71.
- Bayer, Samuel (1997). *Confessions of a Lapsed Neo-Davidsonian*. New York: Garland.
- Behaghel, Otto (1923). *Deutsche Syntax. Eine geschichtliche Darstellung*. Heidelberg: Winter.
- (1928). *Geschichte der deutschen Sprache*, 5th edn. Berlin: de Gruyter.
- Bhart, Christa, and Lindlar, Markus (eds) (1998). *Alles Kölsch. Eine Dokumentation der aktuellen Stadtsprache in Köln*. Bonn: Bouvier.
- Biblia (1989). *Biblia*. Tbilisi: Sakartvelos Sapatiantko.
- Bodomo, Adams (1997). *Paths and Pathfinders: Exploring the Syntax and Semantics of Complex Verbal Predicates in Dagaare and Other Languages*. Ph.D. dissertation, Norwegian University of Science and Technology, Trondheim.
- Boeder, Winfried (1995). 'Suffixaufnahme in Kartvelian', in Frans Plank (ed.), *Double Case: Agreement by Suffixaufnahme*. New York: Oxford University Press, 151-215.
- (1999a). 'Attribution in Georgian', in Helma van den Berg (ed.), *Studies in Caucasian Linguistics: Selected Papers of the Eighth Caucasian Colloquium*. Leiden: Universiteit Leiden, 50-9.
- (1999b). 'Some notes on the Georgian resultative', in Werner Abraham and Leonid Kulikov (eds), *Tense-Aspect, Transitivity and Causativity*. Amsterdam: Benjamins, 117-39.
- (2002). 'Syntax and morphology of polysynthesis in the Georgian verb', in Nicholas Evans and Hans-Jürgen Sasse (eds), *Problems of Polysynthesis*. Berlin: Akademie, 87-111.

- and Schroeder, Christoph (1998). 'Attribution und sekundäre Prädikate im Sprachvergleich: Deutsch, Englisch, Kurdisch, Georgisch, Türkisch', *Sprachtypologie und Universalienforschung* 51(3): 207-27.
- Bohnenberger, Karl (1913). *Die Mundart der deutschen Walliser im Heimatal und in den Aussenorten*. Frauenfeld: Huber.
- Bolinger, Dwight (1971). *The Phrasal Verb in English*. Cambridge, Mass.: Harvard University Press.
- Braune, Wilhelm (1987). *Althochdeutsche Grammatik*, 14th edn. Tübingen: Niemeyer.
- Bresnan, Joan (1982). 'Control and complementation', *Linguistic Inquiry* 13(3): 343-434.
- and Mchombo, Sam (1986). 'Grammatical and anaphoric agreement', in Anne Farley, Peter Farley, and Karl-Erik McCullough (eds), *Papers from the Parasession on Pragmatics and Grammatical Theory. CLS 22, Part 2*. Chicago: Chicago Linguistic Society, 278-97.
- Breu, Walter (1994). 'Interactions between lexical, temporal and aspectual meaning', *Studies in Language* 18(1): 23-44.
- Brunce, Les (1984). *The Alamblak Language of Papua New Guinea (East Sepik)*. Canberra: Pacific Linguistics.
- Brunn, Leo (1918). *Die Mundart von Obersaxen im Kanton Graubünden. Lautlehre und Flexion*. Frauenfeld: Huber.
- Bucheli Berger, Claudia, and Glaser, Elyra (2002). 'The syntactic atlas of Swiss German dialects: empirical and methodological problems', in Sief Barbiers, Leonie Cornips, and Susanne van der Kleij (eds), *Syntactic Microvariation*. <http://www.meertens.knaw.nl/books/symic/>
- (2004). 'Zur Morphologie des (ko)prädikativen Adjektivs und Partizip II im Alemannischen und Bairischen', in Franz Patocka and Peter Wiesinger (eds), *Morphologie und Syntax deutscher Dialekte und Historische Dialektologie des Deutsch*. Vienna: Praesens.
- Burčulage, Tea (2002). 'Predikatali gansazyvrebis "orgvari" bunebis taobaze Kartuliš? The double nature of the predicate complement in Georgian' (Résumé 55). *Saenatmechiero siebani* 13: 50-5.
- BWB: *Bayerisches Wörterbuch* (1997). Herausgegeben von der Kommission für Mundartforschung. Heft 3. Munich.
- Carlson, Gregory N. (1977). *Reference to Kinds in English*. Bloomington: Indiana University Linguistics Club.
- and Pelletier, Francis J. (eds) (1995). *The Generic Book*. Chicago: University of Chicago Press.
- Carrier, Duncan, Jill, and Randall, Janet H. (1992). 'The argument structure and syntactic structure of resultatives', *Linguistic Inquiry* 23(2): 173-234.
- Chierchia, Gennaro (1995a). *Dynamics of Meaning*. Chicago: University of Chicago Press.
- (1995b). 'Individual-level predicates as inherent generics', in Carlson and Pelletier (1995: 176-223).

- Chomsky, Noam A. (1985). *The Logical Structure of Linguistic Theory*. Chicago: University of Chicago Press.
- (1999). *Derivation by Phase*. MIT: Occasional Working Papers in Linguistics 18.
- Čikobava, Arnold et al. (eds) (1950–64). *Kartuli enis gammartebiti lekšikoni*. Tbilisi: SSSR Mecnierebata Akademii gamomcemloba.
- Cinque, Guglielmo (1999). *Adverbs and Functional Heads: A Cross-Linguistic Perspective*. Oxford: Oxford University Press.
- Clark, Marybeth (1996). 'Where do you feel? Stative verbs and body-part terms in mainland Southeast Asia', in Hilary Chappell and William McGregor (eds), *The Grammar of Inalienability*. Berlin: de Gruyter, 59–64.
- Clauss, Walter (1929). *Die Mundart von Uri. Laut- und Flexionslehre*. Frauenfeld: Huber.
- Coates, Jennifer (1983). *The Semantics of the Modal Auxiliaries*. London: Croom Helm.
- Collins, Chris (1993). *Topics in Ewe Syntax*. Ph.D. dissertation, MIT.
- Cootes, Sandra (1989). 'Grammatical and anaphoric agreement in Sesotho'. MS.
- Corbett, Greville (1998). 'Morphology and agreement', in Andrew Spencer and Arnold M. Zwicky (eds), *The Handbook of Morphology*. Oxford: Blackwell, 191–205.
- Craig, Colette G. (1977). *The Structure of Jacaltec*. Austin: University of Texas Press.
- Dale, Desmond (1972). *Shona Companion*. Gwelo, Zimbabwe: Mambo Press.
- Dauwvalder, Hans (1992). *Haslititsch. Wie mma s seid und cha schreiben. Eine hasidische Kurzgrammatik*. Meiningen: Gemeinnütziger Verein Meiningen.
- Davidson, Donald (1967). 'The logical form of action sentences', in Nicholas Rescher (ed.), *The Logic of Decision and Action*. Pittsburgh: University of Pittsburgh Press, 81–95. Reprinted in Davidson, Donald (1980), *Essays on Actions and Events*. Oxford: Clarendon Press, 105–22.
- Davidiani, Akaki (1973). *Kartuli enis sintaksi I. Sintaksis zogadi sakixebi*. Martivi cinadadeba. Tbilisi: Ganatleba.
- Topuria, Varlam, and Kaldani, Maksime (1957). *Svanuri prozauli tekstebi II: Balskvenouri kilol/Svanskie prozaičeskie teksty II: Nižnebat'skoe narečie (= Masalebi Kartvelur enata šesavlisatvis III) (SMA, EJ)*. Tbilisi: SMA gam-ba.
- Dechaine, Rose-Marie (1993). 'Serial verb constructions', in Joachim Jacobs, Armin von Stechow, Wolfgang Sternefeld, and Theo Venneman (eds), *Syntax: An International Handbook of Contemporary Research*, vol. 1 (Berlin: de Gruyter), 789–825.
- Delitto, Denis, and Bertinetto, Pier Marco (2000). 'Word order and quantification over time', in Higginbotham et al. (2000: 207–43).
- Dench, Alan C. (1988). 'Complex sentences in Martuthunira', in Austin (1998: 97–139).
- (1991). 'Panyima', in Robert M. W. Dixon and Barry J. Blake (eds), *Handbook of Australian Languages*, vol. iv. Melbourne: Oxford University Press, 125–243.
- (1995). *Martuthunira: A Language of the Pilbara Region of Western Australia*. Canberra: Pacific Linguistics.
- Diesing, Molly (1992). *Indefinites*. Cambridge, Mass.: MIT Press.
- Dieth, Eugen (1986). 'Schwyzertitschi Dialektschrift', in Christian Schmid-Gadalbert (ed.), *Dieth-Schreibung*. Aarau: Sauerländer.
- Dik, Simon C. (1997a). *The Theory of Functional Grammar, Part 1: The Structure of the Clause*. Berlin: Mouton de Gruyter.
- (1997b). *The Theory of Functional Grammar, Part 2: Complex and Derived Constructions*. Berlin: Mouton de Gruyter.
- Hengeveld, Kees, Vester, Eiselme, and Vet, Co (1990). 'The hierarchical structure of the clause and the typology of adverbial satellites', in Jan Nuyts, A. Machtelt Bolkestein, and Co Vet (eds), *Layers and Levels of Representation in Language Theory*. Amsterdam: Benjamins, 25–70.
- Dimmendaal, Gerrit J. (1983a). *The Turkana Language*. Dordrecht: Foris.
- (1983b). 'Turkana as a verb-initial language', *Journal of African Languages and Linguistics* 5: 17–44.
- (to appear). 'Head marking, dependent marking and constituent order in the Nilotic area', in F. K. Ehard Voeltz (ed.), *Studies in African Linguistic Typology*. Amsterdam: Benjamins.
- Dixon, Robert M.W. (1979). 'Ergativity', *Language* 55: 59–138.
- (1994). *Ergativity*. Cambridge: Cambridge University Press.
- Doke, Clement M. (1992 [1927]). *Text-book of Zulu Grammar*. Cape Town: Maskew Miller Longman.
- Dölling, Johannes (2003). 'Flexibility in adverbial modification: reinterpretation as contextual enrichment', in Lang et al. (2003: 511–52).
- Dowty, David R. (1972). 'Temporally restrictive adjectives', in John Kimball (ed.), *Syntax and Semantics*, vol. 1. New York: Seminar Press, 51–62.
- (1979). *World Meaning and Montague Grammar: The Semantics of Verbs and Times in Generative Semantics and in Montague's PTQ*. Dordrecht: Reidel.
- (2003). 'The dual analysis of adjuncts/complements in Categorical Grammar', in Lang et al. (2003: 33–66).
- Dürscheid, Christa (2002). '"Polenik satt und Wahlkampf pur": Das postnominale Adjektiv im Deutschen', *Zeitschrift für Sprachwissenschaft* 21: 57–81.
- Duthie, Alan S. (1996). *Introducing Ewe Linguistic Patterns*. Accra: Ghana Universities Press.
- Eckardt, Regine (1997). *Events, Adverbs and Other Things*. Ph.D. dissertation, University of Stuttgart.
- Eisenberg, Peter (2002). 'Morphologie und Distribution: Zur Morphosyntax von Adjektiv und Adverb im Deutschen', in Friederike Schmöe (ed.), *Das Adverb: Zentrum und Peripherie einer Wortklasse*. Vienna: Praesens, 61–76.
- Enfield, N. J. (2002a). 'Cultural logic and syntactic productivity: associated posture constructions in Lao', in N. J. Enfield (ed.), *Ethnosyntax: Explorations in Culture and Grammar*. Oxford: Oxford University Press, 231–58.
- (2002b). 'Semantics and combinatorics of "sit", "stand", and "lie" in Lao', in John Newman (ed.), *The Linguistics of Sitting, Standing, and Lying*. Amsterdam: Benjamins, 25–41.

- Enfield, N. J. (2003). *Linguistic Epidemiology: Semantics and Grammar of Language Contact in Mainland Southeast Asia*. London: Routledge Curzon.
- (2004). 'Adjectives in Lao', in Robert M. W. Dixon and Alexandra Y. Aikhenvald (eds), *Adjective Classes: A Cross-Linguistic Typology*, Oxford: Oxford University Press. 333–47.
- (to appear). 'Multi-verb sequences in Lao', in Anthony V. N. Diller and Jerold A. Edmondson (eds), *The Tai-Kadai Languages*. London: Routledge Curzon.
- Enkashvili, Ruben (1977). 'Predikaculi gasazyvrebis sakivi 3vel Kartulsi', 3veli Kartuli Enis Katedris Šromebi 20: 151–64.
- Ernst, Thomas (1984). *Towards an Integrated Theory of Adverb Positions*. Bloomington: Indiana University Linguistics Club.
- (2000a). 'Semantic features and the distribution of adverbs', in Fabricius-Hansen et al. (2000: 79–97).
- (2000b). 'Manners and events', in Tenny and PSTejevsky (2000: 335–58).
- Essegeby, James (1999). *Inherent Complement Verbs Revisited: Towards an Understanding of Argument Structure in Ewe*. Ph.D. dissertation, Leiden University.
- Evans, Nicholas D. (1995). *A Grammar of Kayardild, with Historical-Comparative Notes on Tangkic*. Berlin: Mouton de Gruyter.
- Fabricius-Hansen, Cathrine, Lang, Ewald, and Maierborn, Claudia (eds) (2000). *Approaching the Grammar of Adjuncts*. Berlin: ZAS Papers in Linguistics 17.
- Fanslow, Gisbert (2001). 'Features, theta-roles, and free constituent order', *Linguistic Inquiry* 32: 405–37.
- Ferguson, Charles A. (1959). 'Diglossia', *Word* 15: 325–40.
- Filipenko, Marina V. (2000). 'Adverbials with floating and fixed semantic scope', in Fabricius-Hansen et al. (2000: 99–106).
- Fillmore, Charles J. (1988). 'The mechanisms of Construction Grammar', *Berkeley Linguistic Society* 14: 35–55.
- Fintel, Kai von (1994). *Restrictions on Quantifier Domains*. Ph.D. dissertation, MIT.
- Fischer, Ludwig (1960). *Luzerndeutsche Grammatik und Wegweiser zur guten Mundart*. Zürich: Guggenbühl & Huber.
- Fleck, David (2003). *A Grammar of Matsigenka*. Ph.D. dissertation, Rice University.
- Fortune, George (1955). *An Analytical Grammar of Shona*. London: Longmans Green.
- (1984). *Shona Grammatical Constructions*, part ii. Harare: Mercury.
- Fox, Danny (2000). *Economy and Semantic Interpretation*. Cambridge, Mass.: MIT Press.
- Frey, Werner (2000). 'Syntactic requirements on adjuncts', in Fabricius-Hansen et al. (2000: 107–134).
- and Pittner, Karin (1998). 'Zur Positionierung von Adverbialen im deutschen Mittelfeld', *Linguistische Berichte* 176: 489–534.
- Fuchs, Gabriela (1993). 'Das prädikative Adjektiv und Partizip im Wallserdeutschen', in Helen Christen (ed.), *Variationslinguistik und Dialektologie. Ergebnisse aus studentenschliessenden Arbeiten an der Universität Freiburg/Schweiz*. Freiburg/Schweiz: Germanistica Friburgensia 15, 65–79.
- Gerber, Gustav (1871). *Die Sprache als Kunst*. Bromberg: Mittler'sche Buchhandlung.
- Gender, Wilhelm (2000). *Oriented Adverbs: Issues in the Lexical Semantics of Event Adverbs*. Ph.D. dissertation, Universität Konstanz.
- Gjengešvili, Ivane, Topuria, Varlam, and Kavtaraze, Ivane (1961). *Kartuli dialektologia I: Kartuli enis khlota mokle ganxilva*. Tektsebi: Leksk'oni/Gruzinskaia dialektologia I: Kratkij obzor dialektov gruzinskogo jazyka, Teksty. Slovar' (=Axali Kartuli Enis Katedris Šromebi 3). Tbilisi: TU gam-ba.
- Plonti, Aleksandre (1955). 'Pilologuri narqverebi. 2. Arbituiviani šemameneli Kartulsi', *Stalinis [Cainvalis] Pedagoguri Institutis Šromebi* 2: 254–8 (=Aleksandre Plonti (1980), *Pilologis žanqerebi*. Tbilisi: Sabčota Sakartvelo, 138–43).
- (1978). *Kartuli činadaleba*. Savaržišo masala sintaksisi. Tbilisi: Ganatleba.
- Goddard, Cliff (1985). *A Grammar of Yankunyatjajara*. Alice Springs: Institute for Aboriginal Development.
- (1996). *Pijantjatjara/Yankunyatjara to English Dictionary*. Alice Springs: Institute for Aboriginal Development.
- Goldberg, Adele E. (1995). *Constructions: A Construction Grammar Approach to Argument Structure*. Chicago: University of Chicago Press.
- Green, Georgia (1970). 'How abstract is surface structure?' *Chicago Linguistics Society*, Chicago: Chicago Linguistics Society, 270–81.
- (1973). 'A syntactic syncretism in English and French', in Bray B. Kachru et al. (eds), *Issues in Linguistics: Papers in Honor of Henry and Renee Kahane*. Urbana: University of Illinois Press, 257–78.
- Green, Tom (1987). 'The semantics of Temporal Clitics in Warlpiri'. MS, University of Sydney/MIT.
- Gildemann, Tom (1996). *Verbalmorphologie und Nebenprädikationen im Bantu*. Eine Studie zur funktional motivierten Genese eines konjugationalen Subsystems. Bochum: Universitätsverlag Dr. N. Brockmeyer.
- (1997a). *Prosodische Markierung als sprachliche Strategie zur Hierarchisierung verknüpfter Prädikationen am Beispiel des Shona*. Leipzig: Institut für Afrikanistik, Universität Leipzig.
- (1997b). 'Prosodic subordination as a strategy for complex sentence construction in Shona: Bantu moods revisited', in Robert K. Herbert (ed.), *African Linguistics at the Crossroads: Papers from Kweluseri*. Cologne: Rüdiger Köppe, 75–98.
- (1998). 'The relation between imperfective and simultaneous taxis in Bantu: late stages of grammaticalization', in Ines Fiedler, Catherine Grietenow-Mewis, and Brigitte Reineke (eds), *Afrikanische Sprachen im Brennpunkt der Forschung: Linguistische Beiträge zum 12. Afrikanistentag Berlin, 3.–6. Oktober 1996*. Cologne: Rüdiger Köppe, 157–77.
- Gussenhoven, Carlos (1992). 'Sentence accents and argument structure', in Iggy M. Roca (ed.), *Thematic Structure: Its Role in Grammar*. Berlin: Foris, 79–105.
- Haidler, Hubert (2001). 'Adverb placement: convergence of structure and licensing', *Linguistics in Potsdam* 6: 50–77.
- Haiman, John (1983). 'On some origins of switch reference marking', in Haiman and Munro (1983: 105–28).



- Haiman, John and Munro, Pamela (eds) (1983). *Switch-Reference and Universal Grammar*. Amsterdam: Benjamins.
- Hale, Kenneth (1976). 'The adjoined relative clause in Australia', in Robert M. W. Dixon (ed.), *Grammatical Categories in Australian Languages*. Canberra: Australian Institute of Aboriginal Studies, 78–105.
- (1981). 'Preliminary remarks on the grammar of part-whole relations in Warlpiri', in Jim Hollyman and Andrew Pawley (eds), *Studies in Pacific Languages and Cultures: In Honour of Bruce Biggs*. Auckland: Linguistics Society of New Zealand, 333–44.
- (1982). 'Some essential features of Warlpiri verbal clauses', in Swartz (1982: 217–315).
- (1983). 'Warlpiri and the grammar of non-configurational languages', *Natural Language and Linguistic Theory* 1: 5–47.
- (1994). 'Core structures and adjuncts in Walpiri syntax', in Norbert Corver and Henk van Riemsdijk (eds), *Studies on Scrambling: Movement and Non-movement Approaches to Free Word-Order Phenomena*. Berlin: Mouton de Gruyter, 185–219.
- Laughren, Mary, and Simpson, Jane (1995). 'Warlpiri syntax', in Joachim Jacobs, Armin von Stechow, Wolfgang Sternefeld, and Theo Vennemann (eds), *Syntax: An International Handbook of Contemporary Research*, vol. II (Berlin: de Gruyter), 1430–51.
- and Keyser, Jay (2001). *The Basic Elements of Argument Structure*. Cambridge, Mass.: MIT.
- Halliday, Michael A. K. (1967). 'Notes on transitivity and theme in English, Part I', *Journal of Linguistics* 3: 37–81.
- Harada, Shin-ichi (1975). 'The functional uniqueness principle', *Attempts in Linguistics and Literature* 2: 17–24.
- Harvey, Mark (2002). *A Grammar of Gauguju*. Berlin: Mouton de Gruyter.
- Haspelmath, Martin (1994). 'Passive participles across languages', in Barbara Fox and Paul J. Hopper (eds), *Voice: Form and Function*. Amsterdam: Benjamins, 151–78.
- (1995). 'The converb as a crosslinguistically valid category', in Haspelmath and König (1995: 1–56).
- (2003). 'The geometry of grammatical meaning: semantic maps and cross-linguistic comparison', in Michael Tomasello (ed.), *The New Psychology of Language: Cognitive and Functional Approaches to Language Structure*, vol. II. Mahwah, NJ: Erlbaum, 21–42.
- and Buchholz, Oda (1998). 'Equative and simulative constructions in the languages of Europe', in van der Auwera (1998: 277–334).
- and König, Ekkehard (eds) (1995). *Converbs in Crosslinguistic Perspective: Structure and Meaning of Adverbial Verb Forms*. Berlin: de Gruyter.
- Hayward, Richard J. (ed.) (1990). *Omicron Language Studies*. London: School of Oriental and African Studies.
- Heath, Jeffrey (1984). *Functional Grammar of Nungubuyu*. Canberra: Australian Institute of Aboriginal Studies.

- Heim, Irene (1982). *The Semantics of Definite and Indefinite Noun Phrases*. Ph.D. dissertation, University of Massachusetts.
- Helbig, Gerhard, and Buscha, Joachim (1994). *Deutsche Grammatik. Ein Handbuch für den Ausländerunterricht*, 16th edn. Berlin: Langenscheidt.
- Hengeveld, Kees (1992a). *Nonverbal Predication: Theory, Typology, Diachrony*. Berlin: Mouton de Gruyter.
- (1992b). 'Parts of speech', in Michael Fortescue, Peter Harder, and Lars Kristoffersen (eds), *Layered Structure and Reference in a Functional Perspective: Papers from the Functional Grammar Conference in Copenhagen 1990*. Amsterdam: Benjamins, 29–55.
- Henzen, Walter (1927). *Die deutsche Freiburger Mundart im Sense- und südöstlichen Sebezirk*. Frauenfeld: Huber.
- Herburger, Elena (2000). *What Counts: Focus and Quantification*. Cambridge, Mass.: MIT Press.
- Higginbotham, James, Piansi, Fabio, and Varzi, Achille C. (eds) (2000). *Speaking of Events*. Oxford: Oxford University Press.
- Himmelmann, Nikolaus P. (1997). *Deiktikon, Artikel, Nominalphrase. Zur Emergenz syntaktischer Struktur*. Tübingen: Niemeyer.
- (to appear). 'Lexicalization and grammaticization: opposite or orthogonal?', in Björn Weimer, Walter Bisang, and Nikolaus Himmelmann (eds), *What Makes Grammaticalization? A Look from its Components and its Fringes*. Berlin: Mouton de Gruyter.
- Hinton, Leanne, Nichols, Johanna, and Ohala, John (eds) (1994). *Sound Symbolism*. Cambridge: Cambridge University Press.
- Hotzenköcherle, Rudolf (1934). *Die Mundart von Mitten. Laut- und Flexionslehre*. Frauenfeld: Huber.
- (1961). 'Die Raumstruktur des Schweizerdeutschen', *Zeitschrift für Mundartforschung* 3: 207–27.
- Hudson, Joyce (1978). *The Core of Walnatiarri Grammar*. Canberra: Australian Institute of Aboriginal Studies.
- Hyman, Larry M., and Watters, John R. (1984). 'Auxiliary focus', *Studies in African Linguistics* 15: 233–73.
- Idiotikon. *Schweizerisches Idiotikon. Wörterbuch der schweizerdeutschen Sprache* ed. Friedrich Staub and Ludwig Tobler. Frauenfeld: Huber, vol. I (1881).
- Imnaišvili, Ivane (1948). 'Šedgenili šemasneneli Kartuliš?' *Sostavnoe skazanie v gruzinskom jazyke* (Résumé 214), *Puškinis saxelobis Saxelincipo Pedagogiuri Instituis Stromebi* 5: 187–216.
- (1957). *Saxela bruneba da brunvata punkciebi zvel Kartuliš* (=Šveli Kartuli Enis Katedris Stromebi 4). Tbilisi: Tbilisis universitetis gamomcemloba.
- Imnaišvili, Vaxtang (1997). 'Zu einer Art des "einfachen Objekts" im Georgischen', *Georgica* 20: 83–8.
- Jackendoff, Ray S. (1972). *Semantic Interpretation in Generative Grammar*. Cambridge, Mass.: MIT Press.
- Jacobs, Joachim. (1997). 'T-Topikalisierung', *Linguistische Berichte* 168: 91–133.

- Jacobs, Joachim, von Stechow, Armin, Sternefeld, Wolfgang and Vennemann, Theo (eds) (1995). *Syntax: An International Handbook of Contemporary Research*. Berlin: de Gruyter.
- Jaggar, Philip (1992). *An Advanced Hausa Reader with Grammatical Notes and Exercises*. London: School of Oriental and African Studies.
- Jakobson, Roman (1936). 'Beitrag zur allgemeinen Kasuslehre. Gesamtbedeutungen der russischen Kasus', in Roman Jakobson, *Selected Writings*, vol. ii. The Hague: Mouton de Gruyter, 23-71.
- (1971 [1957]). 'Shifters, verbal categories, and the Russian verb', in Roman Jakobson, *Selected Writings* vol. ii. The Hague: Mouton de Gruyter, 130-47.
- Janda, Laura A. (1993). *A Geography of Case Semantics: The Czech Dative and the Russian Instrumental*. Berlin: Mouton de Gruyter.
- Jespersen, Otto (1965). *A Modern English Grammar on Historical Principles*, part iii: *Syntax*, 2nd vol. London: Allen & Unwin.
- Johanson, Lars (1995). 'On Turkic verb clauses', in Haspelmath and König (1995: 313-47).
- Johnson, Michael (1995). 'When-clauses, adverbs of quantification, and focus', in Susanne Preuss, Raul Aranovich, William Byrne, and Martha Senturia (eds), *Proceedings of the 13th West Coast Conference in Formal Linguistics*. Cambridge: Cambridge University Press, 549-64.
- Katz, Graham (1993). *The Semantics of Free Adjuncts: Deriving the Weak/Strong Distinction*. Cambridge Mass.: MIT Working Papers in Linguistics 20.
- (2000). 'Anti neo-Davidsonianism: against a Davidsonian semantics for state sentences', in Tenny and Pustejovsky (2000: 393-416).
- Kay, Paul, and Fillmore, Charles J. (1999). 'Grammatical constructions and linguistic generalizations: the *what's X doing Y?* construction', *Language* 75: 1-33.
- Keenan, Edward L., and Comrie, Bernard (1977). 'Noun phrase accessibility and universal grammar', *Linguistic Inquiry* 8: 63-99.
- Kilham, Christine, Panulikan, Mabel, Pootchemunka, Jennifer, and Wolmby, Topsy (1986). *Dictionary and Source Book of the Wk-Munkan Language*. Darwin: Summer Institute of Linguistics.
- Kiziria, Anton (1977). 'Gavrcobli šemasmeneļi Kartvelur enebši', *Sakarvelos SSR Mecierebata Akademii Enatneierebis Instituti, Tezisi* 33: 9-11.
- Klimov, Georgij (1974). 'On the character of active languages', *Linguistics* 131: 11-23.
- Kniffka, Gabriele (1996). *NP-Aufspaltung im Deutschen*. Hürth: Gabel.
- Kotod, Frances M. (n.d.). 'Introduction to Kija grammar'. MS.
- Koizumi, Masatoshi (1994). 'Secondary predicates', *Journal of East Asian Linguistics* 3: 25-59.
- König, Ekkehard, and Van der Auwera, Johan (1990). 'Adverbial participles, gerunds and absolute constructions in the languages of Europe', in Johannes Becher, Giuliano Bernini, and Claude Buridant (eds), *Toward a Typology of European Languages*. Berlin: Mouton de Gruyter, 337-55.
- Koster, Jan, and Zwart, Jan-Wouter (2000). 'Transitive expletive constructions and the object shift parameter'. MS, University of Groningen.
- Kratzer, Angelika (1995). 'Stage-level and individual-level predicates', in Carlson and Pelletier (1995: 125-75).
- Kroeger, Paul R. (1993). 'Another look at subadjacency in Tagalog', *Philippine Journal of Linguistics* 24(2): 1-15.
- Kuno, Susumu, and Takami, Ken-ichi (1993). *Grammar and Discourse Principles: Functional Syntax and GB Theory*. Chicago: University of Chicago Press.
- Kutsch Lojenga, Constance (1994). *Ngiti: A Central-Sudanic Language of Zaïre*. Cologne: Rüdiger Köppe.
- Kutscher, Silvia (2001). *Nomen und nominales Syntaxma im Lasischen. Eine deskriptive Analyse des Dialekts von Ardsen*. Munich: Lincom Europa.
- and Geng, Nuran Sevim (1998). *Ardsen narrates—Ardseni na isinapierpe. A Collection of Laz Spoken Texts with Glosses and Translations into English, German and Turkish*. Munich: Lincom Europa.
- Mattissen, Johanna, and Wodarg, Anke (eds) (1995). *Das Mur'of-Lazische Cologne*. Department of Linguistics, University of Cologne.
- Kvačanitraze, Tamaz (1978). *Mgavsebiti šedareba Kartuliš*. Tbilisi: Tbilisis universietis gamomcemloba.
- Kvačaze, Leo (1957). 'Mlmyeobisa da saxelis zogierti pormis sintaksuri kvalifikacisavis', *Komunisturi Ayrdisatis* 12: 27-36.
- (1996). *Tanamedrove Kartuli enis sintaksi*. Meotce ševsebuli gamocema. Tbilisi: Rubl'koni.
- (1999). 'Predikatuli gansazyvrebha zvel Kartuliš', *Enatneierebis Sakixzebi* 1999(4): 31-40.
- (2000a). 'Predikatuli gansazyvrebha Kartuli enis dialektebiš', *Enatneierebis Sakixzebi* 2000(3): 3-9.
- (2000b). 'Predikatuli gansazyvrebha Svanuriš', *Sulxan-Saba Orbelianis saxelobis Tbilis Saxelincipo Pedagogiuri Universitetis Kartuli Enis Karetris Šromebi* 5: 5-12.
- Lamberti, Marcello, and Sottille, Roberto (1997). *The Wolaitta Language*. Cologne: Rüdiger Köppe.
- Landman, Fred (2001). *Events and Plurality*. Dordrecht: Kluwer.
- Lang, Ewald, Maienborn, Claudia, and Fabricius-Hansen, Cathrine (eds) (2003). *Modifying Adjuncts*. Berlin: de Gruyter.
- Larson, Richard K. (1988). 'On the double object construction', *Linguistic Inquiry* 19: 335-91.
- (1991). 'Some issues in verb serialization', in Claire Lefebvre (ed.), *Serial Verbs: Grammatical, Comparative and Cognitive Approaches*. Amsterdam: Benjamins, 185-210.
- Laughten, Mary (1992). 'Secondary predication as a diagnostic of underlying structure in Pama-Nyungan languages', in Iggy Roca (ed.), *Thematic Structure: Its Role in Grammar*. Berlin: Mouton de Gruyter, 199-246.
- (2002). 'Syntactic constraints in a free word order language', in Mengistu Amberber and Peter Collins (eds), *Language Universals and Variation*. Westport, Conn.: Ablex Greenwood, 83-130.

- Laughren, Mary (in press). 'Some Warpiri non-finite clauses reviewed', in Rachel Nordlinger (ed.), *Australian Journal of Linguistics*, Special Issue.
- Lazoglu, Fahri, and Feurstein, Wolfgang (1984). *Lazuri Alfabe. Lazca Alfabe. Entwurf eines lazischen Alphabets*. Parpali 1. Lazuri Carelepe. Laz dili ve kültürü yayımları. Program.
- Lehner, Winfried (2001). 'Phrase structure paradoxes, movement and ellipsis'. MS, University of Tübingen.
- Legendre, Geraldine (1997). 'Secondary predication and functional projections in French', *Natural Language and Linguistic Theory* 15(1): 43-87.
- Lehmann, Christian (1988). 'Towards a typology of clause linkage', in John Haiman and Sandra A. Thompson (eds), *Clause Combining in Grammar and Discourse*. Amsterdam: Benjamins, 181-225.
- Lehmann, Thomas (1993). *A Grammar of Modern Tamil*. Pondicherry: Pondicherry Institute of Linguistics.
- Lewis, David (1975). 'Adverbs of quantification', in Edward Keenan (ed.), *Formal Semantics*. Cambridge: Cambridge University Press, 3-15.
- Lewis, Marshall (1985). *Ewe Relativization, NP Accessibility and Universal Grammar*. Bloomington: Department of Linguistics, Indiana University.
- Li, Charles N., and Thompson, Sandra A. (1981). *Mandarin Chinese: A Functional Reference Grammar*. Berkeley: University of California Press.
- Loos, Eugene E. (1999). 'Pano', in Robert M. W. Dixon and Alexandra Y. Aikhenvald (eds), *The Amazonian Languages*. Cambridge: Cambridge University Press, 227-50.
- Lübker, Friedrich (1837). *Grammatische Studien. Studien zur Syntax des Adjectivums und Adverbiums in den alten Sprachen*. Parchim und Ludwigslust: Hinstorffsche Hofbuchhandlung.
- McConnell-Ginet, Sally (1982). 'Adverbs and logical form', *Language* 58: 144-84.
- McGregor, William B. (1989). 'Phrase fracturing in Gooniyandi', in László Mátész and Pieter Muijsken (eds), *Configurationality: The Typology of Asymmetries*. Dordrecht: Foris, 207-22.
- (1990). *A Functional Grammar of Gooniyandi*. Amsterdam: Benjamins.
- (1992a). 'The noun phrase in (some) Australian languages: a reply to Mark Harvey', *Australian Journal of Linguistics* 12: 315-19.
- (1992b). 'The semantics of ergative marking in Gooniyandi', *Linguistics* 30: 275-318.
- (1997a). 'Functions of noun phrase discontinuity in Gooniyandi', *Functions of Language* 4: 83-114.
- (1997b). 'Indefinite and comparative determiners in Australian languages'. Paper presented at the Second International Workshop on Australian Linguistics, University of Melbourne, December 1997.
- (1997c). *Semiotic Grammar*. Oxford: Clarendon Press.
- (1998a). 'Numerical and Quantifying Words in Australian Languages'. Paper presented to Institut für Sprachwissenschaft and Institut für Didaktik der Naturwissenschaft, Universität Salzburg.

- (1998b). 'Optional ergative marking in Gooniyandi revisited: implications to the theory of marking', *Leuvense Bijdragen* 87: 491-534.
- McKay, Graham (2000). 'Njitébana', in Robert M. W. Dixon and Barry Blake (eds), *The Handbook of Australian Languages*, vol. 5. Melbourne: Oxford University Press Australia, 154-354.
- McNulty, Elaine (1988). *The Syntax of Adjunct Predicates*. Ph.D. dissertation, University of Connecticut.
- Maienborn, Claudia (2000). 'Modification and underspecification: a free variable account of locative modifiers', in Fabricius-Hansen et al. (2000: 153-76).
- (2001). 'On the position and interpretation of locative modifiers', *Natural Language Semantics* 9: 191-240.
- Malchukov, Andrej (1996). 'Internal relative clauses in Tungusic languages in a synchronic and diachronic perspective', *Sprachtypologie und Universalienforschung* 4: 358-82.
- Manser, Joe (2001). *Innerhader Dialekt. Mundartwörter und Redewendungen aus Appenzell Innerrhoden*. Appenzell: Appenzeller Volksfreund.
- Maslov, Jurij S. (1988). 'Resultative, perfect, and aspect', in Vladimir P. Nedjalkov (ed.), *Typology of Resultative Constructions*. Amsterdam: Benjamins, 257-67.
- Mattissen, Johanna (1995). 'Verbmorphologie', in Kutscher et al. (1995: 45-82).
- Menge, Hermann (2000). *Lehrbuch der lateinischen Syntax und Semantik*. Completely new edition by Thorsten Burkard. Darmstadt: Wissenschaftliche Buchgesellschaft.
- Merkle, Ludwig (1975). *Barische Grammatik*. Munich: Heimeran.
- Merlan, Francesca (1982). *Mangarayi*. Amsterdam: North-Holland.
- Meussen, Achille E. (1967). 'Bantu grammatical reconstructions', *Africana Linguistica* 3: 79-121.
- Milsark, Gary L. (1974). *Existential Sentences in English*. Ph.D. dissertation, MIT.
- Moulton, William G. (1941). *Swiss German Dialect and Romance Patois*. Ph.D. dissertation, Yale University.
- Müller, Stefan (2002). *Complex Predicates: Verbal Complexes, Resultative Constructions, and Particle Verbs in German*. Stanford, Calif.: CSLI.
- Müller-Bardley, Thomas (1990). 'Koprädikation als grundlegende syntaktische Operation', in Hansjakob Sellaer with Elke Konrad and Birgit Schwarze (eds), *Internationales interdisziplinäres Kolloquium 'Sprache und Denken: Variation und Invarianz in Linguistik und Nachbardisziplinen'*, Lenzburg/Schweiz, May 1989. Cologne: Arbeiten des Kölner Universälen-Projekts (akup) 8, 1-20.
- Nakajima, Heizo (1990). 'Secondary predication', *Linguistic Review* 7(3): 275-309.
- Napoli, Donna Jo (1975). 'A global agreement phenomenon', *Linguistic Inquiry* 3: 413-35.
- (1989). *Predication Theory: A Case Study for Indexing Theory*. Cambridge: Cambridge University Press.
- Nash, David (1982). 'Warpiri preverbs and verb roots', in Swartz (1982: 165-216).
- (1986). *Topics in Warpiri Grammar*. New York: Garland.
- Nedjalkov, Igor V. (1997). *Evenki*. London: Routledge.

- Nedjalikov, Vladimir P. (1995). 'Some typological parameters of converbs', in Haspelmath and König (1995: 97–136).
- Neelaman, Ad (1994). *Complex Predicates*. Utrecht: Led.
- Nekes, Herman, and Worms, Ernest A. (1953). *Australian Languages*. Fribourg: Anthropos Institut.
- Newman, Paul (2000). *The Hausa Language: An Encyclopedic Reference Grammar*. New Haven, Conn.: Yale University Press.
- Nichols, Joanna (1978a). 'Secondary predicates', *Berkeley Linguistics Society* 4: 114–27.
- (1978b). 'Double dependency?', *Chicago Linguistics Society* 14: 326–39.
- (1981). *Predicate Nominals: A Partial Surface Syntax of Russian*. Berkeley: University of California Press.
- (1982). 'Prominence, cohesion, and control: object-controlled predicate nominals in Russian', in Paul Hopper and Sandra A. Thompson (eds), *Studies in Transitivity*. New York: Academic Press, 317–50.
- (1983). 'Switch reference in the Northeast Caucasus', in Haiman and Munro (1983: 245–65).
- (1986). 'Head-marking and dependent-marking grammar', *Language* 62: 56–119.
- Ogawa, Yoshiki (2001). 'The stage/individual distinction and (in)alienable possession', *Language* 77(1): 1–25.
- Paul, Hermann (1919). *Deutsche Grammatik*, vol. iii. Halle (Saale): VEB Max Niemeyer.
- (1998). *Mittelhochdeutsche Grammatik*, 24th edn. Tübingen: Niemeyer.
- Pianesi, Fabio, and Varzi, Achille C. (2000). 'Events and event talk: an introduction', in Higginbotham et al. (2000: 3–47).
- Pinkster, Harm (1988). *Latente Syntax und Semantik*. Tübingen: Francke.
- Pitner, Karin (1999). *Adverbiale im Deutschen. Untersuchungen zu ihrer Stellung und Interpretation*. Tübingen: Stauffenburg.
- Plank, Frans (1985). 'Prädikativ und Koprpädikativ', *Zeitschrift für Germanistische Linguistik* 13(2): 154–85.
- Platt, John T., and Platt, Heidi K. (1972). 'Orientation of manner adverbials', *Papers in Linguistics* 227–49.
- [Čipšić, Ioseb] (1914). I. Kipšidze: *Grammatika mingrel'skago (ivetskago) jazyka s' chrestomatijju i slovarom* (= Materialy po jafeticeskomu jazykoznaniju 7). Sankt Peterburg: Tipografija Imperatorskoj Akademii Nauk.<sup>2</sup>
- Quirk, Randolph, Greenbaum, Sidney, Leech, Geoffrey, and Svartvik, Jan (1985). *A Comprehensive Grammar of the English Language*. London: Longman.
- Rapport, Tova R. (1991). 'Adjunct predicate licensing and D-structure', in Susan Rothstein (ed.), *Perspectives of Phrase Structure: Heads and Licensing*. San Diego, Calif.: Academic Press, 159–87.
- (1993). 'Verbs in depictives and resultatives', in James Pustejovsky (ed.), *Semantics and the Lexicon*. Dordrecht: Kluwer, 163–84.
- (1999). 'Structure, aspect, and the predicate', *Language* 75: 653–77.

- Reinhart, Tanya (1995). 'Interface economy and makedness', in Chris Wilder, Hans-Martin Gärtner, and Manfred Bierwisch (eds), *The Role of Economy Principles in Linguistic Theory*. Berlin: Akademie, 146–69.
- Roberts, Ian (1988). 'Predicate APs', *Linguistic Inquiry* 19(4): 703–10.
- Rooth, Mats (1995). 'Indefinites, adverbs of quantification, and focus semantics', in Carlson and Pelletier (1995: 265–99).
- Rosen, Georg (1844). *Über die Sprache der Lazen*. Lemgo, Detmold: Meyersche Hochbuchhandlung.
- Rothstein, Susan D. (1985). *The Syntactic Forms of Predication*. Bloomington: Indiana University Linguistics Club.
- (2000). 'Secondary predication and aspectual structure', in Fabricius-Hansen et al. (2000: 241–64).
- (2001). *Predicates and their Subjects*. Dordrecht: Kluwer Academic.
- Rottland, Franz (1982). *Die südindischen Sprachen. Beschreibung, Vergleichung und Rekonstruktion*. Berlin: Reimer.
- SADS: *Syntaktischer Atlas der Deutschen Schweiz* (ongoing project).
- Šaharrelli, Mario (1988). *Basque*. London: Routledge.
- Šaniž, Akaki, and Topuria, Varlam (eds) (1939). *Svanuri prozauli tekstebi I. Balze-mouri k'ia*. Tekstebi šek'ibes A. Šanižem da V. Topuriam (Masalebi Kartvelur enata šec'avlishtvis. I.) (SSRĖ Mecnerebata Akademii Sakartvelos Piliali. ENIMKI.) Tbilisi: SSRĖ Mecnerebata Akademii Sakartvelos Pilialis gamomcemloba.
- and Kaldani, Maksime (eds.) (1978). *Svanuri enis krestomatia*. tekstebi šek'ibes A. Šanižem, M. Kaldama da Z. Čumburijem (=3vdi Kartuli enis katedris šromebi 2). Tbilisi: Tbilissi universitetis gamomcemloba.
- Sapir, David J. (1977). 'The anatomy of metaphor', in David J. Sapir and Jon C. Crocker (eds), *The Social Use of Metaphor*. Philadelphia: University of Pennsylvania Press, 3–32.
- Schein, Barry (1995). 'Small clauses and predication', in Anna Cardinaletti and Maria Teresa Guasti (eds), *Small Clauses*. New York: Academic Press, 49–76.
- Schroeder, Christoph (2003). *Depiktive im Sprachvergleich Deutsch-Türkisch. Eine kontrastiv-typlagische Analyse*. Habilitationsschrift, Universität Osnabrück.
- Schulze-Berndt, Eva (2000). *Simple and Complex Verbs in Laminjung: A Study of Event Categorisation in an Australian Language*. Ph.D. dissertation, Catholic University of Nijmegen.
- (2001). 'The cognitive basis of allative marking of secondary predicates: evidence from Australian languages'. Paper presented at the International Cognitive Linguistics Conference, Santa Barbara, Calif., 24 July 2001.
- (2002). 'Grammaticalized restrictive clitics on adverbials and secondary predicates: evidence from Australian languages', *Australian Journal of Linguistics* 22(2): 231–64.
- and Dawuda, Carmen (2001). 'German depictive secondary predicates in a typological perspective'. MS, Ruhr-Universität Bochum.
- and Himmelmann, Nikolaus P. (2004). 'Depictive secondary predicates in crosslinguistic perspective', *Linguistic Typology* 8(1): 59–131.

- SDS: *Sprachatlas der deutschen Schweiz* (1975). Band III, *Formengeographie*, bearbeitet von Doris Handschuh, Rudolf Hotzenköcherle, Rudolf Trüb u.a., Bern.
- Sicard, Harald von (1965). *Ngano dze Cikaranga (Karangamäriten)*. Uppsala: Institutionen för Allmän och Jämförande Etnografi vid Uppsala Universitet.
- Siewers, Eduard (1892). *Tatjan. Lateinisch und allddeutsch mit ausführlichem Glossar*, 2nd ed. Paderborn: Schöningh.
- Simpson, Jane (1988). 'Case and complementiser suffixes in Warlpiri', in Austin (1988: 205–18).
- (1991). *Warlpiri Morphosyntax: A Lexicalist Approach*. Dordrecht: Kluwer.
- and Bresnan, Joan (1983). 'Control and obviation in Warlpiri', *Natural Language and Linguistic Theory* 1: 49–64.
- Soi Rawa (Guillermo Ramírez Guimaraes) (1995). *Soi Rawa: joni benatian non moabo ipaori*. Programa de Formación de Maestros Bilingües de la Amazonia Peruana. Lima: Asociación Interétnica de Desarrollo de la Selva Peruana and Instituto Superior Pedagógico 'Loreto'.
- Sonderregger, Stefan, and Gadner, Thomas (1999). *Appenzeller Sprachbuch. Der Appenzeller Dialekt in seiner Vielfalt*. Appenzell & Hertsau: Erziehungsdirektionen AR und AI.
- Spagnolo, L.M. (1933). *Bari Grammar*. Verona: Missioni Africane.
- (1960). *Bari English Italian Dictionary*. Verona: Missioni Africane.
- Spring-Chavez, Margarethe (1998). 'Interclausal reference in Amahuaca', in Desmond C. Derbyshire and Geoffrey K. Pullum (eds), *Handbook of Amazonian Languages*, vol. IV. Berlin: Mouton de Gruyter, 443–85.
- Steube, Anita (1994). 'Syntaktische und semantische Eigenschaften sekundärer Prädikate', in Anita Steube and Gerhild Zybatorw (eds), *Zur Satzwertigkeit von Infinitiven und Small Clauses*. Tübingen: Niemeyer, 243–64.
- Stowell, Timothy (1981). *Origins of Phrase Structure*. Ph.D. dissertation, MIT.
- Stucki, Karl (1917). *Die Mundart von Jaun im Kanton Freiburg: Lautlehre und Flexion*. Frauenfeld: Huber.
- Stump, Gregory T. (1985). *The Semantic Variability of Absolute Constructions*. Dordrecht: Reidel.
- Swartz, Stephen M. (ed.) (1982). *Papers in Warlpiri Grammar, in Memory of Lothar Jagst*. Berrimah, NT: Summer Institute of Linguistics.
- (1991). *Constraints on Zero Anaphora and Word Order in Warlpiri Narrative Text*. Darwin, NT: Summer Institute of Linguistics.
- Szadrowsky, Manfred (1936). 'Zur hochalemannischen Syntax IV', *Beiträge zur Geschichte der Deutschen Sprache und Literatur* 60: 445–58.
- Takezawa, Koichi (1993). 'Secondary predication and locative/goal phrases', in Nobuko Hasegawa (ed.), *Japanese Syntax in Comparative Grammar*. Tokyo: Kuroso, 45–77.
- Tenny, Carol (2000). 'Core events and adverbial modification', in Tenny and Pustejovsky (2000: 285–334).
- and Pustejovsky, James (eds) (2000). *Events as Grammatical Objects: The Converging Perspectives of Lexical Semantics and Syntax*. Stanford Calif.: CSLI.
- Tobler, Titus (1837). *Appenzelischer Sprachschatz*. Zürich: Orell Fussli.
- Towert, Taaita (1979). *A Study of Kalenjin Linguistics*. Nairobi: Kenya Literature Bureau.
- Urgugie, Tedo (1960). *Tšürü k'ilo* (=zyvel Kartuli Enis Katedris Šromebi 6). Tbilisi: Tbilissi universitetis gamomcemloba.
- Valenzuela, Pilar M. (1997). 'Basic verb types and argument structures in Shipibo-Konbo'. MA thesis, University of Oregon.
- (1998). 'El morfema de ergatividad en el Shipibo-Konbo', in Luis Miranda and Amanda Orellana (eds), *Actas del II Congreso Nacional de Investigaciones Lingüístico-Filológicas*. Lima, Peru: Universidad Ricardo Palma, 217–45.
- (1999). 'Adverbials, transitivity and switch-reference in Shipibo-Konbo (Panoan)', in Sabrina J. Billings, John P. Boyle, and Aaron M. Griffith (eds), *Chicago Linguistic Society 35: Theory and Linguistic Diversity*. Chicago: Chicago Linguistic Society, 355–71.
- (2002). 'Causativization and transitivity in Shipibo-Konbo', in Masayoshi Shibatani (ed.), *The Grammar of Causation and Interpersonal Manipulation*. Amsterdam: Benjamins, 417–83.
- (2003). *Transitivity in Shipibo-Konbo Grammar*. Ph.D. dissertation, University of Oregon.
- Valiquette, Hilaire (1993). *A Basic Kukajia to English Dictionary*. Wirmannu (Balgo): Luunpa Catholic School.
- Van der Auwera, Johan (ed.) (1998). *Adverbial Constructions in the Languages of Europe*. Berlin: Mouton de Gruyter.
- and Plungian, Vladimir (1998). 'Modality's semantic map', *Linguistic Typology* 2: 79–124.
- Van Valin, Robert, and LaPolla, Randy J. (1997). *Syntax: Structure, Meaning and Function*. Cambridge: Cambridge University Press.
- Vendler, Zeno (1967). 'Verbs and times', in Zeno Vendler, *Linguistics in Philosophy*. Ithaca, NY: Cornell University Press, 97–121.
- Voeltz, F. K. Erhard, and Kilian-Hatz, Christa (eds) (2001). *Ideophones*. Amsterdam: Benjamins.
- Vogel, Petra M. (1997). 'Unflektierte Adjektive im Deutschen. Zum Verhältnis von semantischer Struktur und syntaktischer Funktion und ein Vergleich mit flektierten Adjektiven', *Sprachwissenschaft* 22: 403–33.
- Walch, Maria (forthcoming). 'Bsufig mit einem gestohlenen Auto fahren: Zur Morphosyntax des Partizips II in einem oberdeutschen Dialekt', in Marie Vachková (ed.), *Festschrift für Alena Šimečková*. Prague: Germanistika Pragensia.
- Watkins, Mark H. (1937). *A Grammar of Chichewa: A Bantu Language of British Central Africa*. Philadelphia: Linguistic Society of America and University of Pennsylvania.
- Westermann, Diedrich (1930). *A Study of the Ewe Language*. Oxford: Oxford University Press.
- Wilkins, David P. (1988). 'Switch reference in Mparntwe Arrernte (Aranda): form, function, and problems of identity', in Austin (1988: 141–76).

- Wilkins, David P. (1989). *Mparntwe Arrernte (Aranda): Studies in the Structure and Semantics of Grammar*. Ph.D. dissertation, Australian National University.
- Wilkinson, Melanie (1991). *Djambarrpuyngu: A Yolngu Variety of Northern Australia*. Ph.D. dissertation, University of Sydney.
- Williams, Edwin (1980). 'Predication', *Linguistic Inquiry* 11: 203-38.
- (1983). 'Against small clauses', *Linguistic Inquiry* 14: 287-300.
- Wilson, Stephen (1999). *Coverbs and complex predicates in Wagiman*. Stanford, Calif.: CSLI.
- Winkler, Susanne (1997). *Focus and Secondary Predication*. Berlin: Mouton de Gruyter.
- Wipf, Elsa (1910). *Die Mundart von Vöspertennen im Wallis*. Frauenfeld: Huber.
- WÖB: *Wörterbuch der bairischen Mundarten in Österreich*. 1963-1999. Herausgegeben im Auftrag der Österreichischen Akademie der Wissenschaften, bearb. von Viktor Dollmayr und Eberhard Kranzmayer. Vienna. Bd. i-iii.
- Wodarg, Anke (1995). 'Textsammlung', in Kutscher et al. (1995: 113-32).
- Wynne, Adam Z. (1994). 'Boolean Event Lattices and Thematic Roles in the Syntax and the Semantics of Adverbial Modification'. Ph.D. dissertation, Cornell University.
- Wygand, Guido Vanden (2001). 'Measuring events', *Language* 77: 61-90
- Xubna, Makar (1937). *Megruli tekstebi/Megrul'skie teksty/Textes megréliens* (SSRK Mecnierebata Akademii Sakartvelos Piliali, ENIMKI). Tbilisi: SSRK MA Sakartvelos Pilialis gamomcemloba.
- Yadav, Ramamatar (1996). *A Reference Grammar of Maithili*. Berlin: Mouton de Gruyter.
- Yatsushiro, Kazuko (1999). *Case Licensing and VP Structure*. Ph.D. dissertation, University of Connecticut (distributed by MIT: Working Papers in Linguistics).
- Zavala, Roberto (to appear). 'Serial verb constructions in Olutec', in Alkhenvald and Dixon (to appear).
- Zehetner, Ludwig (1985). *Das bairische Dialektbuch*. Munich: Beck.
- Zhang, Niina (2000). 'The structure of depictive and resultative constructions in Chinese', *ZAS Papers in Linguistics* 22: 191-221.
- Zwicky, Arnold (1987). 'Constructions in monostatal syntax', *Chicago Linguistic Society* 23: 389-401.

## Index of languages

- Alambak 410, 421
- Alemannic *see* German
- Arawaka 259, 298
- Arabic 299, 319, 320
- Anindiyakwa 182, 191
- Arlo *see* Ewe
- Arabic
- Classical Arabic 319
- Egyptian Arabic 299, 320
- Moroccan Arabic 400, 401
- Arrente (Mparntwe Arrernte) 192-5, 197, 338
- Australian languages 12, 31, 33, 35, 40, 42, 50, 54, 59, 60, 62, 63, 65, 69, 173-6, 178, 191, 194, 196, 197, 199, 256, 292, 298, 338, 349, 401, 414, 417
- Bantu languages 302, 323-5, 331, 332, 340, 341, 346, 347, 353
- Bari 64, 308, 309, 321
- Basque 32, 415, 416
- Bavarian *see* German
- Beber 64
- Biniŋ Gun-wok *see* Mayali
- Chechen 213
- Chewa 346
- Chinese *see* Mandarin Chinese
- Djambarrpuyngu 181, 192, 196, 197
- Dutch 11, 394, 411-13
- English 2-6, 8, 10, 12, 14, 15, 18, 19, 22, 24-7, 30, 31, 34, 37, 51, 52, 54-6, 58, 61, 64, chapter 2, 109, 113-15, 117, 119, 128, 134, 136, 140, 141, 143, 146, 147, 163, 175, 191, 201, 214, 218, 256, 265, 272, 280, 344, 351, 352, 355, 371, 377, 379, 382, 390, 391, 395, 397-9, 403, 404, 406-8, 411, 412, 419, 420
- Even 32, 417, 418, 420
- Ewenki 395
- Ewe 11, 24, 32-4, 52, 57, 59, 64, 65, chapter 11, 408
- Arlo 372
- Kpele 365, 370
- Fula 408, 409, 412, 413
- Gaagudju 181, 184
- Georgian 12, 14, 28, 31-5, 37, 39, 41, 42, 44, 46, 47, 53, 54, 62, 65, chapter 6, 237, 238, 240, 241
- German 2-4, 8, 10, 11, 13, 14, 18, 34, 36, 38, 53-8, 109, 113, 115-17, 123, 127, 128, 131, 138, 140-3, 145, 148, 153, 155, 161-5, 171, 201, 218, 235, 255, 349, 351, 352, 377, 403-5
- Alemannic 142, 143, 148, 156, 158, 165
- Bavarian 142, 158, 160
- Dialect of Cologne 58
- Dialect of Diepoldsau 65, 159, 170
- Dialects of Appenzell 28, 32, 40, 44, 45, 62, 146, 147, 153-65, 169-71
- Middle High German 142, 156-9
- Old High German 142, 148, 151-3, 156, 159, 171
- Swabian 142
- Swiss German 25, 28, 30, 32, 40, 41, 44, 45, 51, 53, 54, 60, 62, 65, chapter 4, 403, 404, 420
- Germanic languages 59, 145, 403, 420
- Gooniyandi 33, 173-5, 178-80, 183, 185-7, 189, 190, 192, 196, 197
- Greek (Old Greek) 40, 212
- Gunwinyguan languages 181
- Ilokano 53, 351, 352
- Indo-Aryan languages 419
- Italian 32, 142
- Jabirjabirr 189
- Jacalteco 350
- Jaminjung 59, 63, 65, 180, 183, 187, 190, 193
- Jiwari 174, 192

# Secondary Predication and Adverbial Modification

---

*The Typology of Depictives*

Edited by  
NIKOLAUS P. HIMMELMANN AND  
EVA SCHULTZE-BERNDT

**OXFORD**  
UNIVERSITY PRESS



**OXFORD**

UNIVERSITY PRESS

Great Clarendon Street, Oxford oxford 0x2 6np

Oxford University Press is a department of the University of Oxford.  
It furthers the University's objective of excellence in research, scholarship,  
and education by publishing worldwide in

Oxford New York

Auckland Cape Town Dar es Salaam Hong Kong Karachi  
Kuala Lumpur Madrid Melbourne Mexico City Nairobi  
New Delhi Shanghai Taipei Toronto

With offices in

Argentina Austria Brazil Chile Czech Republic France Greece  
Guatemala Hungary Italy Japan Poland Portugal Singapore  
South Korea Switzerland Thailand Turkey Ukraine Vietnam  
Oxford is a registered trade mark of Oxford University Press  
in the UK and in certain other countries

Published in the United States  
by Oxford University Press Inc., New York

© editorial matter and organization Nikolaus P. Himmelmann and  
Eva Schulze-Berndt 2005

© the chapters their authors 2005

The moral rights of the authors have been asserted  
Database right Oxford University Press (maker)

First published 2005

All rights reserved. No part of this publication may be reproduced,  
stored in a retrieval system, or transmitted, in any form or by any means,  
without the prior permission in writing of Oxford University Press,  
or as expressly permitted by law, or under terms agreed with the appropriate  
reprographics rights organization. Enquiries concerning reproduction  
outside the scope of the above should be sent to the Rights Department,  
Oxford University Press, at the address above

You must not circulate this book in any other binding or cover  
and you must impose the same condition on any acquirer

British Library Cataloguing in Publication Data

Data available

Library of Congress Cataloging in Publication Data

Secondary predication and adverbial modification : the typology of depictives / edited by  
Nikolaus P. Himmelmann and Eva Schulze-Berndt.

p. cm.

Summary: "This book approaches depictive secondary predication from a crosslinguistic  
perspective. It maps out all the phenomena and brings together critical surveys and new  
contributions on their morphosyntactic and semantic properties."—Provided by publisher.  
Includes bibliographical references and index.

ISBN 0-19-927226-3 (alk. paper)

1. Grammar, Comparative and general—Syntax. 2. Grammar, Comparative and  
general—Verb phrase. 3. Grammar, Comparative and general—Adverbials. 4. Semantics.  
5. Typology (Linguistics) I. Himmelmann, Nikolaus. II. Schulze-Berndt, Eva.  
P295.S413 2005  
415—dc22

2004024152

Typeset by Newgen Imaging Systems (P) Ltd., Chennai, India

Printed in Great Britain

on acid-free paper by  
Biddles Ltd., King's Lynn

ISBN 0-19-927226-3

## Contents

|   |      |
|---|------|
| <i>Preface and chapter summaries</i>  | viii |
| <i>Acknowledgements</i>   | xv   |
| <i>The contributors</i>   | xvi  |
| <i>Abbreviations and glossing conventions</i>   | xx   |
| 1 Issues in the syntax and semantics of participant-oriented<br>adjuncts: an introduction<br><i>Nikolaus P. Himmelmann and Eva Schulze-Berndt</i> | 1    |
| 2 Depictives in English and Warlpiri<br><i>Jane Simpson</i>   | 69   |
| 3 Adverbials and depictives as restrictors<br><i>Thomas Müller-Bardey</i>   | 107  |
| 4 Depictive agreement and the development of a depictive<br>marker in Swiss German dialects<br><i>Claudia Bucheli Berger</i>                      | 141  |
| 5 Quantifying depictive secondary predicates in<br>Australian languages<br><i>William B. McGregor</i>   | 173  |
| 6 Depictives in Kartvelian<br><i>Winfried Boeder</i>  | 201  |
| 7 On depictive secondary predicates in Laz<br><i>Silvia Kutscher and N. Sevim Genç</i>  | 237  |
| 8 Participant agreement in Panoan<br><i>Pilar M. Valenzuela</i>   | 259  |
| 9 Secondary predicates and adverbials in Nilotic and Omotic:<br>a typological comparison<br><i>Azeb Anha and Gerrit J. Dimmendaal</i>             | 299  |
| 10 Asyndetic subordination and deverbal depictive expressions<br>in Shona<br><i>Tom Gildemann</i>   | 323  |
| 11 Forms of secondary predication in serializing languages:<br>on depictives in Ewe<br><i>Felix K. Ameka</i>                                      | 355  |